

Cub Packs 222 And 252 Stage Pinewood Derby 2000



Cub Scouts painting their racing cars for the Pinewood Derby held Saturday March 18th at the Key Peninsula Civic Center. (From L to R:) Travis Huddleston, Bryce Truller, Angus Schaefer and Logan Schaefer. Photo by Ann Waldo



Dad, Mark Caviness gives his sons a hand on their cars for the Pinewood Derby, held Saturday March 18th at the Key Peninsula Civic Center. Photo by Ann Waldo

by Laura Huddleston

Cub Scout Pack 222 hosted a pinewood derby on Saturday, March 18th at the Civic Center. Their guests were members of Pack 252. There were many cars in all shapes and colors. The goal was to keep the weight of each car under 5 ounces or as close to 5 as possible. The boys, dads, and moms all worked diligently to add weight or subtract it.

The winners over all the packs were: 1st place, John Montjoy-Pepka, 2nd place, Lance Ross, and 3rd was Alex Jordan. There were winners in many categories. Most original design, most creative, best paint job, and the fastest looking. Some boys spent hours or weeks while others just threw them together in an hour. The most surprising win was one

entered as experimental. It was the plain block with wheels fresh out of the box, not even painted. However, it did not compare to the real winners.

A fun exciting time was had by all, thanks to organizer, Bob Shaw, who put it all together.

Members of the Key Peninsula Lion's Club contributed their culinary talents to make sure that no one went hungry. Their proceeds go to the Key Peninsula Civic Center.

"Pride of Civic Center"

**First Annual Workday
and Potluck
April 22**



Consider this a formal invitation to join other volunteers at the First Annual "Pride of Civic Center" workday and potluck at the Civic Center on April 22 at 10:00. Bring your weed eaters, trimmers, clippers, spades, shovels, wheelbarrows, buckets and gloves!!

We need to trim around and clean the tennis courts, do a little pruning and shaping, trim the blackberries, weeding, and general outdoor cleanup of the grounds. We also have indoor chores. Everything from cleaning to painting the lower balcony. A team of "caulkers" is needed to fill holes and ready the gym for painting.

Not only is the work party going to be fun (we guarantee it) but the food should be great too! Bring your favorite potluck item and we'll bring the beverages. See you there. Give us a call and let us know when you can be here and how long you can stay.

We look forward to a really fun day of community effort.



YOU ARE INVITED!

"Town Hall Meeting"

Immediately following the Pierce County Council Meeting, scheduled at 7:00 PM, in the Whitmore Room at the Key Peninsula Civic Center on May 2, 2000, there will be a meeting on Meth Labs in Pierce County.

Information will be provided by staff from the Pierce County Sheriff's office and Tacoma-Pierce County Health Department on the following subjects:

**Education on the dangers of Meth labs,
How to detect a Meth lab,
Meth lab hotline,
Successes from previous busts,
and How we win the war against Meth
labs in Pierce County.**

You are encouraged to attend this town hall meeting to ask questions and share information about your neighborhood. Bring a friend!

Annual Easter Egg Hunt At The Key Peninsula Civic Center On April 23



The local Boy Scout troop will be in charge of the annual Easter egg hunt this year at the K P Civic Center. To make it more convenient for participants to attend church services and still participate in the egg hunt, it will not start until 1:00 PM.

KEY PENINSULA CIVIC CENTER

FROM THE OFFICE

By Vicky McClung

April brings several events to the Civic Center. The Lions Club Citizen of the Year banquet is April 1st. As you saw in the last issue, there were several worthy citizens nominated for this special honor. Most likely, by the time you receive this paper, you'll know who the winner is! The TOPS have their annual rummage sale on April 8th and Reno Night returns on April 29th. We are still looking for volunteers to work this event...let us know if you're available. National Earth Day is in April and we have chosen to celebrate Earth Day on April 22 with a "Pride of Civic Center" workday and potluck. We hope you can share that day with us as we give the Civic Center a Spring Facelift. Actually I'd like one of those.

As you will see at the bottom of this month's calendar, once a year the Pierce County Council meeting is held on the Key Peninsula ... this year's meeting is May 2nd at 6:30 in the Civic Center's Whitmore room.

Lori Warkocki has joined the staff at the Civic Center as our on-site Security Person. She and her son, Jake, moved into the newly renovated apartment a couple of weeks ago. We certainly welcome Lori and hope you have a chance to meet her soon.

One last thing. Beginning April 1st we are changing the office hours — opening a little earlier and closing earlier. New hours are 9:00 to 5:00 Tuesday through Saturday.

SPECIAL NOTES

* Two new TCC Classes beginning this month: Yoga and a one-day "Worm Bin" composting class.

* Many thanks to the Lions for working the kitchen for the Scout's Pinewood Derby—they booked 59 1/4 hours of volunteer hours!

* Pride in Civic Center Workday on April 22! See Article.



The Children's Home Society's FAMILY ROOM

The Key Peninsula Family Support Center offers a variety of programs for parents and children. These programs will help maximize parenting skills and child development. Research in brain development shows that the first three years of a child's life is crucial. Babies raised by warm, caring, attentive parents or adults, and in a safe, predictable environment are better learners than babies raised in a less attentive or constantly changing environment. Parents and experts have long known the way the preschooler, teenager and even how the adult functions goes back to those early experiences in those first three years of life.

The research on brain development has brought new information to light. First, research tells us brain development that takes place during the prenatal period and in the first year of life is more rapid and extensive than we previously thought. Second, brain development is much more vulnerable to environmental influences than we ever suspected. Third, the influence of early environment on brain development is long lasting. Fourth, the environment affects not only the number of brain cells and number of connections among them, but also the way these connections are "wired." And fifth, we have new scientific evidence for the negative impact of early stress on brain function.

The risks are clear: an adverse environment can jeopardize a young child's brain function and overall development, placing the child at greater risk of developing a variety of learning difficulties, behavioral problems, and physical difficulties. But positive opportunities are equally dynamic: a good start in life can do more to promote learning and prevent damage than we ever imagined.

An active involvement in a stimulating, challenging and loving environment causes the brain to grow and flourish. Our programs offered to families at the Key Peninsula Family Support Center either through home visiting or groups are geared to promote the child's mental and physical growth through parent education, activities, experiences and support.

Children's Home Society will be walking in the Jr. Daffodil Parade again this year. The parade is on April 8 and begins at 10:00 a.m. You and your children are welcome to join us! Call Rosalyn Alber for more information at 884-5433.

In collaboration with Child Reach, another session of Developmental Screening for birth to age-3 children will be offered on April 11 from 10:00 a.m. to 2:30 p.m. in the Whitmore Room at the Civic Center. Please call Glenna Bruey at 798-3698 for more information and to set up appointments.

Children's Home Society Family Resource Center at the Key Peninsula Civic Center is proud to continue the Wee Play Parent-Toddler Class with activities specifically designed to capture toddlers' interest and encourage learning in five areas: Art, Language/Books, Fine Motor Skills, Gross Motor Skills, and Sensory Play. The next session of eight classes will be on Fridays beginning on April 7 from 9:30 a.m. to 11:30 a.m. Classes will be held at the Longbranch Improvement Club. Please call Michele Blanchette at 884-5433 to register!

We are offering two parenting classes in April. Outside speakers will be enlightening us on April 6 regarding *The Juvenile Justice System and Family Law* from 7:00-9:00 p.m., and on April 13 regarding *ADHD and ADD*, also from 7:00-9:00 p.m. We will have no Parenting of Teens Support Group on April 6, and only the 1:00-2:30 p.m. session of Relatives Raising Children on April 13 will meet because of the speaker events.

Continuing programs include our free Clothing Closet, Indoor Park, Lending Library, Toddler Art, Wee Play, Little Buddies and Parents Raising Healthy Families. Little Buddies will not be meeting on April 18 due to Spring break. Call 884-5433 if you have any questions regarding our referral services or programs. (Please see calendar for additional times and dates on our activities.)

The staff of the
Children's Home Society of Washington
Key Peninsula Family Resource Center

Across to the Continent

by Colleen Slater

In Milano, Italy, hotels in the depot area were expensive, but we paid the extra tariff. Good beds, great shower, chocolates & delicious apples, which Frank figured came from one of the Swiss orchards we'd passed by that day. The most marvelous array of breakfast choices: fruits, breads, meats, cheese, yogurt, quiche, cereal and beverages.

For dinner that night we had a cross-cultural experience: An Asian, speaking fluent Italian, behind the counter in a McDonald's.

At the town near Napoli where we were to disembark, no station, no phone in sight. A man with an open door dialed Jamie's number, but would accept no compensation. Frank admired a bush with purple and red fruits, and I asked "Peppers?" "Pepperoni," he said. "Bonita," I told him, as it was a very pretty and colorful bush. He proceeded to show us "la flore", both bud and flower, and the peppers at varying stages of maturity. He picked five and gave them to me. "Frio?" I asked at which he indicated with gestures and sounds that they were exceedingly "hot". I had said my daughter-in-law was Italian, and when I now said I didn't know how to use them, he said, "Your daughter, she know." All this friendliness in contrast to words painted on the back of the building: Yankee go home! Rosaria was delighted with the peppers. She chops then marinates them in olive oil and uses the oil in cooking. Very hot peppers, she said.

Thunder in the morning and a few wet droplets, but we managed the whole "tour" of Pompeii without real rain. Much is being restored, and it was interesting to compare the 'baths' here with those in Bath, England. A new delight for me was the nursery, where they are growing various herbs and flowers to replant the city, and Oleander was identified as the plant we'd seen blooming all over Italy, from pot size to small trees. Again we were impressed with the preserved mosaics and marble counters of many colors. We lunched at the Ristorante Internazionale, the site of an ancient Abbey. Our table was one of several in the former cloister. After royal treatment of food and service, and browsing through an album of famous guests (including Hillary Clinton), Rosaria and I received small gifts from host Giovanni - pottery dishes from Pompeii.

KPCCA Executive Committee 2000

PRESIDENT:

Dave Stratford
884-2566

1st VICE PRESIDENT:

(Maintenance)
Lloyd Miller
884-2536

2nd VICE PRESIDENT:

Betty Kelley
884-4126

TREASURER:

Virginia Liebergesell
884-3603

SECRETARY:

Kristen Bottiger
884-5420

AT LARGE:

Shirley Olson
884-2481

AT LARGE:

Sylvia Haase
884-3603

PAST PRESIDENT:

Dale Loy
884-4169 or 884-3937



THE LAW COLUMN

by Michael Misner

With the most recent tragedy on the Narrows Bridge, one wonders what can be done to make that span safer? I have represented numerous people seriously injured or killed on the bridge; two of them stand out most clearly.

In 1984, I was asked by the parents of Wendy Mittlestadt to represent them regarding the death of their daughter who was working on the bridge as a flagger during a resurfacing project being completed by the Department of Transportation. Wendy was killed when a westbound driver hit her with his car on the second night of the project.

Incredibly, a few weeks later, Cal Gilbert was killed on the last night of the same project by a driver heading east bound. His widow asked me to handle her case, too. Mr. Gilbert was also working as a flagger at the time of his death.

One project, two deaths and families left to grieve forever. What could be done about it?

The first job was to file suit for the wrongful death of Wendy and Cal.

The second job was to subpoena the traffic control plan that had been approved by the DOT. I hired a professor at the University of Washington's Civil Engineering department to assist me. His name was Roy Sawhill and he was recognized as one of the leading traffic control experts in the country.

Professor Sawhill, after studying the traffic control plan, realized that the DOT's plan had created a situation where a horrible accident was inevitable. By using accepted traffic control principles, he created an alternate design for routing traffic that, in our opinion, would have avoided both accidents.

The third job was to take depositions of DOT personnel to determine how their plan was approved in the first place. The efforts revealed that the bridge is too narrow to qualify for federal funds and that a waiver had to be obtained before that money could be received. Simply stated, the lanes are wide enough, but it's the complete lack of shoulders that disqualified the bridge for federal money. However, because it's the only Narrows Bridge we have, waivers have been granted so that much-needed federal money could be received.

The depositions produced evidence that the bridge couldn't structurally handle the combined weight of traffic and concrete jersey barriers which could be used as lane dividers. That is why, over the years, we have all seen red plastic stanchions bolted to the bridge surface in an effort to provide demarcation for motorists.

The depositions also disclosed that the DOT had removed every other light pole on the bridge as a result of the energy crises in the early 1970's. In other words, the bridge was darker than it was designed to be. You can clearly see where the light poles used to be to this very day.

As a result of many depositions and hours spent with Professor Sawhill, our case developed a simple theme. We argued that, from the beginning, the DOT knew that the bridge was too dark, too narrow and that there was no physical way to safely separate the cars from one another.

Our solution was to use State Patrol cars on both ends of the bridge with blue lights flashing during night work. This would be a clear signal for approaching drivers to slow down. We also argued the use of pilot cars when necessary as well as large, bright illuminated reader boards miles before the actual construction site, again to alert drivers to what lay ahead. When on the bridge, cars traveled on the outside lanes as much as possible when in the vicinity of workers. Workers in the area were to be outfitted with radios to warn one another of dangerous drivers coming their way.

When the DOT settled with us, they began using the very model that Professor Sawhill created. That is why when you now cross the bridge at night during a construction project the place is lit up like Safeco Field. Today there are illuminated signs, state troopers, patrol cars and large red-orange traffic cones all over the place. Workers are on the phone talking to one another about traffic conditions.

In the 16 years that have passed since Cal and Wendy were killed, there have been several resurfacing projects on the bridge.

There has not been a single bridge worker fatality.

Appreciation And Apologies

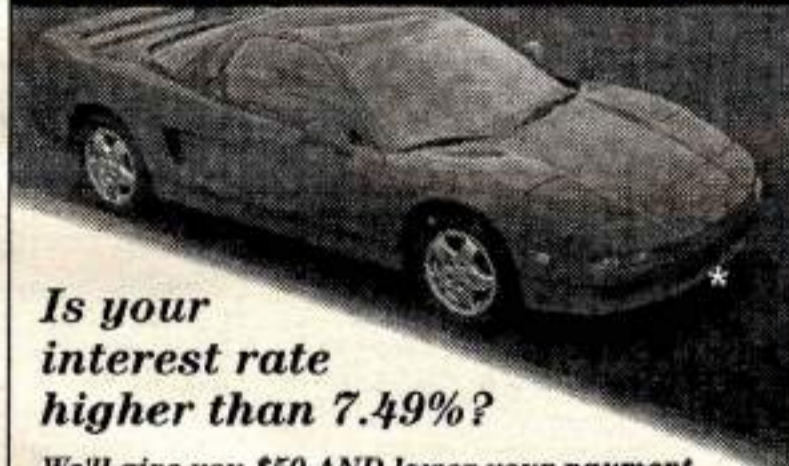
Due to an error on our part, a commercial outfit was given credit for doing up the feast at the recent KP Firefighters' Association Dinner. We would like to give the proper people credit for devoting their time to plan, acquire, cook and serve over 225 dinners to the attendees. (Not to mention, clean-up!) Thanks to you all for your contributions:

Marge Marcum, Philip Marcum, Patty Marcum, Tonia Cole, Diana Cruz, Ryan Williams, Eric Nelson, Deanna Jones, Chris Jones, Ruth Bramhall, Shirley Frame, Todd Vanscoyk, Kelhi Vanscoyk, Christie Lyon and others we skipped.

You did a great job! The music was loud, but good!

Happy Easter April 23rd!

ATTENTION • GREAT DEAL



**Is your
interest rate
higher than 7.49%?**

We'll give you \$50 AND lower your payment.

From now through April, if you bring your higher interest rate auto loan from another financial institution, we'll give you \$50 and a rate as low as 7.49%. A lower payment and cash back, you can't beat it!

We'll refinance your existing loan and give you these great features:

- Rates as low as 7.49% up to 66 months
- 1993 or newer models
- 100% financing
- NO loan fees

*Subject to credit approval. Your new loan will be determined by individual credit worthiness including income, debt ratio, employment and credit history. This offer is not valid on existing Telco Community Credit Union auto loans.



**Telco
Community
CREDIT UNION**
Your Pierce County Credit Union
253-383-2016

Main Office: 1330 Broadway Place, Tacoma, WA 98401
Gig Harbor: 4551 Pt. Fosdick Drive N.W., Gig Harbor, WA 98335
Key Center: 8920 Key Peninsula Hwy. N., Key Center, WA 98349
Puyallup: 117 14th Ave. S.E., Puyallup, WA 98372
Parkland: 9911 Pacific Ave., Tacoma, WA 98444

Grace Presbyterian Church

(253) 857-77284

10:30 AM Sunday

Miracle Ranch
15999 Sidney Rd S.W.

Wetzel Recycling

884-2772

CRUSHED CAN'S \$.30 / LB.

NON-CRUSHED CAN'S \$.18 / LB.

CANS WITH TRASH AND FOIL/OTHER ALUMINUM WILL BE DISCOUNTED UNLESS SEPARATED. FOIL MUST NOT CONTAIN ANY ROCKS, FOOD, ETC.

ACCEPTING DONATIONS OF ALUMINUM CIVIC CENTER, BOY SCOUTS, VOLUNTEER PARK AND OTHER NON-PROFIT ORGANIZATIONS I WILL ADD \$.05 TO ABOVE PRICES PER LB. CHECKS WILL BE SENT OUT QUARTERLY UNLESS THEY ARE OVER \$30.00

WANTED

BICYCLE S, LAWN MOWERS, CHAIN SAWS, OUT BOARD MOTORS AND ALL OTHER ALUMINUM, COPPER, BRASS, FOAM PACKING, ETC. NO STEEL

Lakebay Community Church

An Evangelical Covenant Church



Pastor Chuck Wahlstrom

"Bringing the truth of God's Word And a demonstration of Jesus' love To the Key Peninsula."

Worship:

Sunday - 10:30
Sunday School: 9:15
Pioneer Club - Wed. 6:30 p.m.
Women's Bible Study - Thurs. 9:30 a.m.

11 Cornwall Rd.
Lakebay WA 98349
(1 mile south of Home Bridge)

Phone: 884-3899

**MYR
MAR**

**SEE US FOR
ALL YOUR
TAX NEEDS?**

- Individual & Corporate Tax Returns
- Monthly Bookkeeping Services Payroll
- Financial Statements
- Business Consulting
- Notary Public
- Computers & Add Ons Available
- Quickbooks Consulting

Myr-Mar Accounting Service, Inc.

Members of NAEA, WSTC & KPBA
Marv & Myrtle Keizur, CTP

Visit Our Web Site
<http://www.myr-mar.com>

884-3566

KEY PENINSULA HEALTH CENTER
8903 Key Peninsula Hwy, N Lakebay



A View From Home

by Marty Marcus

As you've probably noticed, this column tends to focus on some of the aspects of problems that seem to be under-reported in most of the media. Problems that range from domestic violence to the disappearance of salmon. Today I'm pleased to be able to report on two items you may not see elsewhere that are good to hear about.

We've all noticed the little "Dolphin Safe" logo on cans of tuna, and I guess have taken for granted that dolphin kills by tuna fishers had dropped to acceptable levels. In fact, that was true for awhile. However, under some of our country's trade agreements with other countries, they complained that our regulations were interfering with their traditional methods of catching tuna, and the U.S. knuckled under to those complaints and changed our regulations. I don't want to ruin your day, so I won't give you the details of how these other countries go about catching tuna. Just take my word for it that it's harder on the dolphins than it is on the tuna.

But since I promised you some good news, I need to tell you that the three major tuna

packers in the U.S., Star-Kist, Chicken of the Sea, and Bumblebee Tuna, have agreed to get their tuna only from suppliers who can guarantee that the "Dolphin Safe" label is really true.

The second good news item has to do with the trucking industry in the U.S. You'll have to look hard to find anyone more critical than I am of our trucking industry. It costs a lot more to build our highways to withstand the heavy trucks. Their diesel fumes really pollute the air. When they have an accident, it's usually a humdinger, especially if it's on the Narrows Bridge. But in the mail there came a letter from the Second Harvest food bank system about a program called Relief Fleet that really improves the image of the truckers.

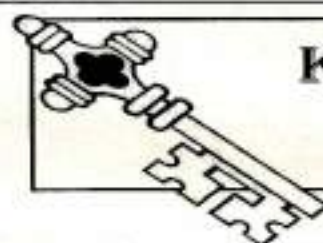
Truck operators, after they have delivered their load, like to be able to load something else to take back to their point of origin so they don't just travel back empty. I remember, when I lived in California and was involved in the poultry and dairy feed industry, that trucks would come down from the northern part of the state with a load of lum-

ber and something black rolled up on top of the load. After the lumber was unloaded, they drove over to Stockton, unrolled the thing that had been on top of the lumber, which turned out to be a rubberized tank which they filled with several thousand gallons of molasses to haul back up to the Eureka area.

Sometimes truckers aren't lucky enough to find a load to haul back. What the people at Second Harvest discovered is that sometimes large quantities of donated food couldn't get from the donor to a food bank because the food bank couldn't afford to pay

for hauling it. That's where Relief Fleet enters the picture. A number of trucking companies have offered to transport the donated food for free, as long as their trucks were going to return empty anyway.

That's the silver lining in the cloud of diesel exhaust.



KEY DATES 2000

BUSINESS / PROFESSIONAL GROUPS

KP Business Assoc.	1 st Friday - 7:30 AM	Home Port Rest.
	3 rd Friday - Noon	Horseshoe Lake Rest.
Fire Fighters Assoc.	4 th Wednesday - 7:00 PM	Key Center Fire Sta.

CIVIC ORGANIZATIONS

Amnesty International	2 nd Thursday at 7:00 PM	Key Center Library
Ashes	1 st Monday at 10:30 AM	Key Center Fire Station
Boy Scout Troop #220	Tuesday-6:00 PM - 8:00 PM	- KPCC Whitmore Rm.
Cootiettes	3 rd Thursday at 7:00 PM	KPCC/Whitmore Rm.
KPCCA Exec. Comm.	1 st Monday - 7:00 PM	Civic Center
KPCCA Board	2 nd Thursday - 7:00 PM	KPCC/Whitmore Rm.
KPCS Board	2 nd Monday - 10:00 AM	Comm. House - Home
KPHC Board	4 th Thursday - 7:30 PM	Health Center
KP Lions Club	1 st & 3 rd Wed. - 6:30 PM	KPCC/Whitmore Rm.
VFW & Auxiliary	2 nd & 4 th Mon. - 7:00 PM	CC/VFW Room/Wm Rm.

COMMUNITY SERVICES

Adult Literacy Classes - Call for Appointment 851-6552 - Gig Harbor
Angel Guild 4th Monday - 10:00 AM Brones Rm./KC Library
Children's Home Society Family Resource Center - Monday through Friday, 9:00 AM to 4:00 PM, Key Peninsula Civic Center, Lower Level - Call 884-5433
Food Bank - Tues. through Fri., 10:00 AM to 3:00 PM Comm. House - Home
Hot Lunch for Seniors on Wednesdays at Noon - Community House - Home
 Also food & clothing assistance. For More Information, call 884-4440, 884-4514, or 857-4780.
Immunizations (FREE) Thursday, 10:00 AM to 4:00 PM at **Urgent Care**, Gig Harbor.
The Key Peninsula Well Child Clinic at the office of Dr. Roes every Tuesday at 9:00 AM.
Key Center Library 884-2242 - Hours: Tuesday & Wednesday 1 - 8 PM, Thursday & Friday, 1 - 6 PM, Saturday, Noon - 4 PM.
KP Baptist Bible Study Wednesday - 7:00 PM - 8:30 PM KP Civic Center
Overeaters Anonymous Wednesday - 7:30 PM St. Nicholas Church
Seniors Exercise Program Tues. & Thurs. - 8:30 to 9 PM Comm. House, Home
There Is Hope 12-Step Christian Support Group Thursdays at 7:00 PM at Lakebay Christian Assembly Church - 253-884-3659.
WIC (Women, Infants & Children) Every Tuesday 8:00 AM to 4:00 PM Civic Center, in the VFW Room. Call: 884-3835 on Tuesdays for an appointment.

PUBLIC MEETINGS

KP Fire Commissioners	2 nd Wednesday - 7:00 PM	Key Center Fire Sta.
	2 nd Monday after 2 nd Wednesday at 4:00 PM	Key Center Fire Sta.
KP Parks & Rec.	2 nd Monday - 7:00 PM	Volunteer Park Annex

SELF-HELP GROUPS

Alcoholics Anonymous - Mon. through Fri. 8:00 PM - Sat. & Sun. - 6:00 AM
 At the Key Peninsula Community Services in Home.
Peninsula ALANON - King of Grace Lutheran Church, Purdy - Tuesday 1:30 PM
Caregivers Support 2nd Tuesday - 7:00 PM Brones Rm./KC Library
Grandparents Group 1st Monday - 1:00 to 3:00 PM Brones Rm./KC Library
 Contact Norma at 884-2205 for more information.
T.O.P.S. Tuesday Evening Weigh-in 6:15 PM - Meeting at 7:00 PM - Civic Center
T.O.P.S. Tuesdays at 9:00 AM at Longbranch Improvement Club

SOCIAL & HOBBY GROUPS

Bayshore Garden Club 3rd Friday of each month, for more information call Sylvia Retherford at 884-2487, Longbranch Improvement
KP Historical Society 1st Thursday - 7:30 PM KP Historical Museum
Museum Open Thursday and Saturday from 1:00 PM to 4:00 PM.
LB Improvement Club 3rd Friday - 7:00 PM Longbranch Improvement
Peninsula Neighbors 3rd Wednesday - 7:00 PM Longbranch Fire Station
Lakebay Fuchsia Society 1st Thursday - 7:00 PM Brones Rm./KC Library
Ruth Circle Meeting 3rd Monday - 10:00 AM Bible Study, lunch and Meeting at 12:00 Noon at the Longbranch Church.
Senior Society Luncheon Thursdays - Noon KPCC/Whitmore Room
Vaughn Bay Garden Club Call 884-5403 for more information.
Key Singers Tuesdays 7:00 - 9:00 PM Longbranch Comm. Church
 Contact Jo Sturm - 884-1350

NOTE: IF YOU WOULD LIKE YOUR ORGANIZATION LISTED HERE, PLEASE MAIL THE INFORMATION BY THE 20TH OF EACH MONTH TO: KEY DATES, KEY PENINSULA NEWS, P.O. BOX 3, VAUGHN, WA 98394, OR FAX IT TO US AT: 884-4053.

KEY PENINSULA NEWS

To Subscribe, Please Write,
 Call or FAX:
Key Peninsula News
 P.O. Box 3, Vaughn, WA 98394
 (253) 884-4699
 FAX: (253) 884-4053

Key Peninsula News is published monthly by the Key Peninsula Civic Center Association at the Key Peninsula Civic Center in Vaughn, Washington. Copyright 2000 with all rights reserved. Reproduction of editorial or graphic content in any manner without permission is prohibited. Annual subscriptions (12 issues) are available for \$10.00 and are mailed First Class. Copies are mailed Third Class to residents and POBox holders of the Key Peninsula. Single copies are available at the newspaper office in the basement of the Civic Center annex and at various distribution points located on the Key Peninsula. Approximately 18,000 people live in the distribution area. Submission of articles is encouraged and the deadline for all material is the 20th of the month.

MISSION STATEMENT OF OWNERSHIP, PURPOSE AND OPERATION OF THE KEY PENINSULA NEWS

1. THE KEY PENINSULA NEWS is a community newspaper, owned and published by the KEY PENINSULA CIVIC CENTER ASSOCIATION, a non-profit, 501-C3, corporation with main offices in Vaughn, Washington. The name, goodwill and any copyright assets that may exist pertaining to the NEWS are among the financial assets of the KEY PENINSULA CIVIC CENTER ASSOCIATION.
2. The primary purpose of the NEWS is to serve as communication between the KPCCA Board (and its activities) and the residents of the Key Peninsula, generally corresponding with the defined geographical area of Pierce County Fire District 16.
3. The secondary purpose of the NEWS is to serve as a communication means between the KPCCA member organizations and the residents of the same area.
4. The NEWS shall be entirely free of political bias, and shall advocate no particular religious point of view. Further, its service will be open to all local organizations and residents, subject to the availability of space and generally accepted good taste and legal considerations.

OUR GRATEFUL THANKS TO ALL WHO CONTRIBUTE TO THE KEY PENINSULA NEWS!

Editors: Marty Marcus, Ann Waldo
 Ad Sales: Bob Stackhouse
 Production: Alice Tramil
 Staff Reporters & Staff Photographers:
 Hugh McMillan, Anne LaCroix, Lori Deacon
 Proof-readers: Marty Marcus, Ann Waldo
 Accounting: Christie Lyon

The opinions expressed herein are the opinions of the writers and do not necessarily reflect the views of the publishers or staff. All Letters to the Editor must be signed and include a daytime phone number for verification. No anonymous letters will be published. Submissions are used on a space available basis and may be edited if used. THE KEY PENINSULA NEWS reserves the right to edit letters for length and content and no religious or political material will be printed. Mail letters to: P.O. Box 3, Vaughn, WA 98394.

KPCCA Board Meeting Minutes March 9, 2000

The meeting was called to order by the President @ 7:00 PM.

The following motions were seconded and carried.

- To accept the February board meeting minutes as written.
- To accept the Treasurer's report.
- To have WIC write letter to VFW explaining why they want the valence & curtain put up in the VFW room.
- To accept Lori Warkocki as security person after background check.
- To accept office hours changing from 10-6 to 9-5 starting April 1st.

Managers Report

Vicky McClung said the Seniors did a great job in the kitchen for Winter Visuals putting in 52 hours. TOPS also did a great job with their volunteer hours of 57 for the Scouts Blue & Gold Ceremony. Lions will be putting in their hours for the Pinewood Derby.

Newspaper Report

Marty Marcus said the insert in the last paper increased revenue and they are hoping for more to come. Still working on timing and accuracy. Bob Stackhouse had a stroke while on vacation so he won't be back to the paper until next month. Working on proposals to present to the board. Gateway having press problems. Paper will need a new printer to handle 11x17 paper. They plan on working out of the Civic Center office once there is more room.

Children's Home Society- In need of more equipment for "Indoor Park". If you have any items to donate, please contact Edie Morgan.

Scouts- Vicky Schauer reported the Scouts will host the Easter egg hunt this year.

Tops- Phyllis Tiernan and Jena Henak reported they had 16 volunteers and put in 57 hours towards volunteer time. They would like to participate in recycling at the Center.

Flavor of Fall- Claudia Loy reported that an income of \$16,024 was raised.

Millenium Party- Claudia Loy reported that an income of \$213.12 was raised.

Reno Night- Ed Taylor needs 50 volunteers, 20 dealers. He would like to schedule three dealer-training dates ASAP. Please contact Ed at 884-3600 for more information.

Announcements-The Center will host a "Pride of Civic Center Day" on April 22. Meeting adjourned.

Kristen Bottiger, Secretary

Tax Tips



by R. Marvin Keizer CTP

Here it is tax time again, and it seems like only yesterday we were involved in this annual duty. Again we would like to suggest that you be careful whom you pick for a tax preparer. Why is that you may ask? Because all tax preparers are not fully prepared to give the best advice or service. There are several things you ask the preparer before you make your final decision.

1. How much training did you receive in 1999? (I had to receive 30 credit hours.)
2. Do you belong to any organizations that offer training and support?
3. How many years of experience have you had in doing tax returns?

It might also matter to some people if electronic filing is offered.

These are just a few basic things to consider; after all you want to pay as little as possible and receive as large as possible refund.

Tacoma Community College Spring Quarter Classes at KP Civic Center

Registrations for the following classes are currently being taken at TCC Gig Harbor Center, 3993 Hunt St., or you can register by phone at 851-2424 using Visa or Mastercard.

8092 Worm Bin Composting Sat. April 29 10am-12n

Set up and maintain a worm composting bin. Taught by the Pierce County Public Works and Utilities Department. Fee includes bin, worms and book. Fee: \$29.

8093 Yoga: Beginning /Intermediate Wed. April 12-May 10 1-2:30pm

Learn basic yoga postures and breathing techniques from a professional. Fee: \$45

8094 Yoga: Beginning/Intermediate Wed. May 17-June 14 1-2:30pm

Same as above. Fee: \$45

8091 Basic Investing Sat. May 6 9am-12n

Basic class for the beginning investor. Take advantage of the bull market and learn about stocks, bonds and mutual fund investing. Fee: \$25

8097 Creative Wall Finishes Sat. May 13 & 20 10am-1:30pm

Bored with white walls? Learn color theory and experience tagging, stenciling, color washing and other popular texturing techniques. Bring children's dry watercolor set to first class. Fee: \$49

Sign up today and expand your horizons!!

Craft Group

PENINSULA NEIGHBORS CRAFT GROUP will be selling unique seasonal handcrafted items on Saturday, April 15, Noon to 3:30 pm at the Key Center Library. All proceeds support local charities. Contact person: Alta Van Someren—884-5424.

DENTURES

LAB ON PREMISES

Partials • Same Day Relines • One Hour Repairs

**Dentures Need To Be
Relined Every 3 To 5 Years,
Replaced Every 12 To 15 Years.**

*Ill-fitting dentures can cause
wrinkles around the mouth,
and other health problems*

FREE
Denture Consultation

With coupon. Exp 6/23/00 Not valid with any other offer.

Senior Discounts • Insurance and DSHS Welcome

**Gig Harbor Denture Clinic
Pat Carbone, D.P.D.
858-3457**

**3618 Grandview St. NW
Mon-Fri 9-5 • Sat & Sun by appt.**

\$50.00 OFF

Purchase of Full Upper
& Lower Denture or Partials

PURDY COSTLESS PRESCRIPTIONS

** We Will Beat Any Competitors
Prescription Price!*

14218 - 92nd Ave NW
Gig Harbor, WA 98329

Don Zimmerman
Owner
857-7797



Vacation Rentals

"Come Stay With Us"

One & Two Bedroom Furnished Suites

- Daily and Weekly Rates
- Restaurant Next Door • Phones
- Satellite TV (HBO, ESPN) • Bus Lines
- Behaved Pets Welcome
- Best Rates in Town

Web Site: www.westwyndmotel.com
Located in the waterfront community of Purdy,
just seven miles from the Tacoma Narrows Bridge.

**Westwynd
Motel Suites**

(253) 857-4047 • 800-468-9963
6703 144th St. N.W. • Gig Harbor, WA 98332

Angel Notes

by Frankie Johnson

Things are so cute and the atmosphere is warm and friendly in the pleasant little shop known as the Angel Guild Thrift Shoppe in beautiful K.C. Corral in downtown Key Center, it is no wonder that our many regular customers enjoy sometimes daily shopping tours. It is as much fun for our Angels as it is for our public. Now is the time to come in for the Easter bargains. All the stuffed animals that we sell have been washed before placing them in the store. There are some absolutely darling ones to be taken home for you or a child. We have a lot of baskets and other decorative wares for the season and, of course, clothing. Joan Steele is in charge of fabric now and she has them packaged very attractively and measured for you.

Last month was a bonanza as we approved ten donations to be granted to the community. We will have to do them over a period of time as the money comes in from the store. On our list of recipients are KGHP, our local radio station, for repairs; many requests from KPMS to help the students with extra tools that the school can't provide in the library, science, music and art departments; to the fire department, funds for a defibrillator; and to Camp Easter Seal, money to fix the pool filter. It is very gratifying to be a volunteer and really be a help to our own area.

Donations as usual are the life blood of this operation. Please bring your good discards to the shed in the back of the store and put them on the covered porch. We have volunteers there nearly every day during store hours 10:00 AM to 4:00 PM Wednesday through Friday, and 11:00 AM to 3:00 PM on Saturday. Workers are there on Monday and Tuesdays sorting and stocking the store. It takes a lot of cooperation and time from this dedicated group to present the quality of merchandise our valued customers have come to expect. That is our objective and why we are volunteers in the Angel Guild.

Reno Night Training

Dealer Training Classes will be held at the Civic Center during the month of April.

Dates: April 4
April 11
April 18

All classes will be held at 7:30 PM. Our next RENO NIGHT will be held on April 29.

For additional information call
Mike at 851-4556 or Ed at 884-3600.



VETERAN'S VOICES

By Eileen Young

Just seeing the robins searching for worms in the green grass, the daffodils blooming like bright rays of sunshine, makes me think of an early spring. This makes for one happy gardener!

Remember the "tinkle of bells" we spoke of last month? We are happy to report they ring for Billye Smith and new bride Pam. Congratulations and much happiness to the newlyweds.

April is a busy month as we gear up for our Loyalty Day celebration. REMEMBER, your luncheon reservations must be in by April 15th. Send your check for \$8.50 to Cy Young. The time for lunch is 2:30, the date, April 29th and the place is the Longbranch Improvement Club. The program starts at 2pm so come support your VFW, have fun at the same time.

Folks on the CARE CIRCLE for this month are Karen Barrow, Irene Wooldridge, Buzz Simon, Lillian Montaney, Judy Wilson and Ernie Shreve. As always, anyone who is not 100% has our love and prayers. Our sincere condolences to The Russ Christine family and to Jean Barnes on the passing of her husband Bob, who was a VFW comrade and respected member of our community.

Next meeting: April 10th, nominations and election of new officers for the Auxiliary; for the Post, nominations, with elections April 24th. Installation ceremony May 10th. Attend your meetings, support your VFW and serve your community.

See you next month, keep well and remember: Nothing is more terrifying than ignorance in action.

Children's Rights Revisited

The year 2000 marks the 10th anniversary of the *Convention on the Rights of the Child*. The adoption of this international agreement doesn't, of course, guarantee that it is being carried out fully in all countries, but maybe reminding people of its existence will be helpful in getting it implemented. The rights of the child as spelled out in this document are:

- 1) Each child has the right to play, and that means in a "child-friendly" safe space.
- 2) Each child has the right to protection from war, which means that even during hostilities, temporary truces can be arranged to allow for immunizations and other health care, food and other essentials

to be provided for children caught behind firing lines.

3) Each child has the right to protection from violence, which includes not only schools, streets and playgrounds, but means that children should not have to serve as soldiers.

4) Each child has the right to adequate nutrition, which means more than one meal a day at school, and in our country, one out of every five people in line at a food bank shouldn't have to be a child.

5) Each child has the right to health care and vaccination, one right not met in very many countries.

6) Each child has the right to education, a right withheld from girls by certain religious groups in some countries.

7) Each child has the right to family and home. In some countries, there is a major problem trying to reunite displaced children and their parents.

8) Each child has the right to protection from forced labor. Many countries have laws prohibiting children from working in factories and fields, but the laws often go unenforced.

9) Each child has the right to equal opportunity. In West and Central Africa, for example, the "African Girls' Education Initiative", sponsored by UNICEF, is making schools more welcoming to girls and more relevant to their needs.

Thinking of Buying Your First Home?



MIKE COFFIN

Branch Manager

The combination of personal knowledge and experience, combined with the warm desire to help families and individuals reach their financial goals puts Mike and his associates above the competition.

FHA/VA/Conventional Financing
Purchase or Refinance
Home Equity and 2nd
Mortgages up to 125%
Commercial, non-owner,
second homes, manufactured/
land packages
Specializing in:
First-time home buyers
Down Payment Assistance
Programs
Self-employed programs
No, slow or bad credit OK

Call now for a convenient appointment:

(800) 863-8730

Pager (253) 597-3118

Mikec@horizonmortgage.com

FREE

Clip this coupon and bring it to your "no obligation" consultation.

Finance your New Purchase with Horizon Mortgage and receive a certificate for a free Home Security System to be installed in your new home. A \$1,135.00 value!!!

Free initial credit report. Free personalized service and expert consultation at your convenience.

Free pre-approval. If approved you'll receive a "Your Home on Plastic" credit card that certifies you as a cash buyer allowing you a negotiating edge when making offers to home sellers.

Free entry for a monthly drawing of a Lake Union dinner cruise for two on a fabulous casino cruise ship.



HORIZON
MORTGAGE
and Investment Company

Your Hometown Mortgage Source - A licensed mortgage broker



First-Time Home Buyers Have Myriad Of Financing Choices

by Michael Coffin

I remember when my wife and I were deciding to buy our *first* home. There were virtually no options for financing. A large down payment and a bank loan was one option. The only other choice was to have the seller finance the property by carrying the loan on a contract for deed. Not so today. There are many programs and a myriad of choices for first-time home buyers now.

The Federal Housing Administration (FHA) assists people in purchasing homes. FHA loans are important because they allow for lower down payments and have generally broader underwriting requirements.

The U.S. Veterans Administration helps veterans get into their own homes through the use of the VA Guaranteed Loan Program. This program allows a qualified veteran to make no down payment to acquire a personal residence. Today, a person who has served on active duty, or during a war or conflict, is probably eligible for this benefit. In addition, Congress has extended the benefit to reservists and National Guard troops who have six years of service.

Down payment assistance programs provide funds needed to close a home purchase. They contribute additional funds that can be used to meet a buyer's minimum required investment and/or pay mortgage loan closing costs. These programs come in many formats. Some are outright grants that require no repayment. Others include unsecured loans that need only be repaid when the home is sold or if a borrower moves from the property before a certain period. Other programs offer deferred-payment second mortgages or loans with an interest rate below the market. Some programs involve a combination of these formats.

Mortgage credit certificates assist borrowers with their monthly payments. Under current IRS Tax Codes, home mortgage interest is deductible. For borrowers meeting certain income limitations, the IRS will allow lower withholding tax deductions from borrowers' paycheck. The increase in take-home pay enables borrowers to qualify for a higher monthly housing payment.

Subsidized interest rate loans are offered by many states, counties and cities. Local government municipal bonds are used to provide funds for home mortgages. Municipal bonds are exempt from some taxation, reducing the interest rates for these mortgages; lower rates increase a borrower's purchasing power and/or reduce their monthly housing payments.

While mortgage assistance programs increase home ownership opportunities, most come with restrictive covenants. Many have maximum household income limitations. Early and profitable sale of a home can result in tax penalties when the IRS "recaptures" tax benefits received by a homeowner participating in a program. Careful review of both the requirements and restrictions of these programs is essential.

Most of the programs are administered by local government agencies, but the loan application and process are done by local mortgage professionals. Some of the programs require the mortgage professional to be certified, bonded, and even conduct annual audits to be approved to administer these programs. Less than ten percent of our local mortgage pros are capable of servicing these types of loan requests.

There are many Federal, state and local housing assistance programs designed to help create home ownership opportunities. Consumers should research various programs available in their area that meet their specific financial needs. Check the "blue page" section your phone directory listing community or county services such as housing, financial assistance or community development. Additional housing assistance information can be obtained from the US Department of Housing and Urban Development (HUD), Federal Housing Administration (FHA) office listed under U.S. Government in the phone directory. Generally, each agency provides written material outlining the programs that can help in the application process.

Michael Coffin is branch manager of Horizon Mortgage Direct your questions or comments to: mikec@horizonmortgage.com

Adopt A Beach Volunteers Needed

Become a part of the Paralytic Shellfish Poisoning (PSP) Detection Network!
Collect Mussel Specimens at Penrose State Park

Adopt a Beach is looking for a volunteer (or volunteers) to collect mussels at Penrose State Park beginning immediately. The volunteer(s) would collect mussels once every two weeks and send them (at no cost to the volunteer) to either a County or Washington State Dept. of Health Lab. The mussels are tested at the lab for the Paralytic Shellfish Poisoning (PSP) toxin. If the test results show that the shellfish are contaminated at or above the closure limit then the beach is closed to harvesting.

PSP is a serious illness that is caused by eating shellfish that have consumed large amounts of a poison-producing microscopic organism known as *Alexandrium catenella*. The *A. catenella* toxins are extremely potent nerve poisons. In fact, as little as one milligram can be enough to kill an adult. The poison acts very rapidly and no antidote has yet been discovered. The PSP toxin occurs naturally and blooms in the late summer and early fall months. So far no relationship between population density or activities and PSP has been shown.

The best way to protect our safety is to check shellfish from a specific beach every two weeks to see if they are toxic and then close the beach when advisable.

You can be a part of this important work and help protect your family, your friends and yourself by volunteering.

Contact Amber Cornell at 1-(888)-57-Beach or at aab@halcyon for more information.

Horseshoe Lake Bar & Grill

At Horseshoe Lake Golf Course

GREAT FOOD AT AFFORDABLE PRICES!

WEDNESDAY
FILET MIGNON
2 FOR \$19.95

THURSDAY
PRIME RIB
\$8.95

FRIDAY
BUFFET
\$7.95



857-3784

HOURS: Mon-Sun 6:30-9:00 P.M.

Now Open For

Breakfast, Lunch and Dinner

"Visit our website www.HLgolf.com"

Cross Purdy Bridge-Right on 94th Ave.(Across From Horseshoe Lake)

Close to Home

ESPRESSO

Mon. - Thurs., 5:00 AM - 5:00 PM
Fri. - 5:00 AM - 5:30 PM
Sat. - 7:30 AM - 5:00 PM
Sun. - 8:00 AM - 4:00 PM

Next to Walt's In Key Center

LAKEBAY ROOFING

Pierce, Kitsap, and
Mason Counties

- RESIDENTIAL •
- RE-ROOFING •

SHAKE • TORCH DOWN • TILE
COMPOSITION • CEDAR
SHINGLES

Free Estimates

884-2186

Tom Rolfzen - Owner

WN. ST. CONSTR. REG. LAKEBR*1570K

State Offers Incentives for Local Groups to Fund Scholarships

The state-funded Community Scholarship Matching Grant Program provides \$2000 matching grants as an incentive for non-profit, community-based organizations to raise local dollars for college scholarships. 122 grants were funded this past year and another 122 will be funded for the coming year starting July 1. Anyone interested in starting a group for this purpose or getting an existing group to take this on as a project can get more information by calling Jose Dominguez, HEC Board, (360) 753-7846. Thanks to State Senator Bob Oke for alerting us to this opportunity to help deserving students get into college.

ROBERT M. BARNES OBITUARY

Robert M. Barnes, 80, a Tacoma/Longbranch area resident his entire life, passed away February 29, 2000. He was born in Tacoma on October 2, 1919. Robert had retired as General Manager of Six Roblee Truck & Trailer Parts in Tacoma. He served in the U. S. Navy during WWII and was a member of the Vaughn VFW Post. He belonged to the Longbranch Improvement Club and was actively involved in Pierce County Fire District #16 for 22 years as both a volunteer fire fighter and Fire Commissioner.

Family members include: his wife, Jean Barnes, Longbranch; brother, James Barnes, Puyallup; sisters: Mary Roberts (Bob), Puyallup; and Margaret McBride (Donald), Maui.


At his request, no services were held. In lieu of flowers, remembrances may be made to Pierce County Fire District #16 Volunteer Fire Fighters Training Program, 8911 KPN, Lakebay 98349.

COMING SOON !!! JAZZ IN JUNE!!!

We have scheduled another evening of Great Jazz
at the Key Peninsula Civic Center
with

The Prohibition Jazz Band
Saturday, June 3rd.

So get in the mood and practice your fancy steps and put it on your calendar.
Tickets on sale soon.



**TO YOUR
HEALTH**
by
William F. Roes,
MD

One of the topics suggested for review in my monthly articles is the development of seemingly "new" viruses that are cropping up and causing diseases. The Sin Nombre Hantavirus is one such virus, that "emerged" in the mid 1980's, causing disease and death to exposed people. Whether this is actually a "new" virus causing a "new" disease or one that has been around but undetected and undiagnosed is hard to state but it is a virus worth knowing about.

The hantavirus is the cause of hantavirus pulmonary syndrome, a disease resulting from either inhaling the virus or direct contact with it. The host of the virus is the deer mouse (*Peromyscus maniculatus*) which is common in rural western Washington. It's estimated that about 10% of the deer mouse population is infected. They generally don't live in occupied houses, but are often found in outbuildings and deserted sheds. They can be identified by their white belly and long tails. There have been no documented cases in Pierce County, but four cases west of the Cascades were reported in 1999. The hallmark symptoms of HPS start 6 weeks after exposure to the virus which usually occurs with exposure to mouse droppings or occasionally in handling a dead rodent. Patients with the disease develop fever, chills, body aches, and sometimes nausea and vomiting. Cough and shortness of breath are late symptoms and are cause for alarm. The fatality rate in full blown HPS is over 30%, and treatment is mainly supportive.

As usual, the best form of treatment is prevention, and it's wise to take some precautions before you start your spring cleaning out in the barn or empty woodshed. If you are cleaning areas that could include mouse nests, authorities recommend protecting yourself with a surgical mask and rubber gloves. Obvious nests should be wetted down with a solution of bleach water or other effective antiseptic before they are removed. You should maximize ventilation to the area to be cleaned and minimize airborne dust and exposure to the dust - a shovel is probably better than a vacuum cleaner in this situation. Once again, your risk in Pierce County is small, but it's probably a good practice to decrease your exposure when possible. For more information on this you can contact the King County Health Department at 206-296-4949 or the State Department of Health at www.doh.wa.gov. Happy spring cleaning!

RENO NIGHT



Deal yourself a winning hand!

OPEN BAR. Food & Refreshments Available -
Kitchen opens at 5:PM with a full menu.
Play 21 * Dice * Bingo * Blackjack * Chuck-a-luck *
Beat the Dealer * Wheel of Fortune.

4/29/2000
TIME 6:00 PM

Key Peninsula Civic Center

VAUGHN, WASHINGTON

Reno Nights are good for you.

*Have a
Blessed
EASTER*

Healthy People, Healthy Communities

If you're considering the purchase of a handgun for personal protection you may want to think twice. Researchers at the University of California at Davis found that suicide is the leading cause of death among recent purchasers of handguns. Of 238,292 individuals who legally purchased handguns in California in 1991, it was found that the first week following the purchase of a handgun the firearm suicide rate among purchasers was 57 times higher when compared to the state's population as a whole. Within the first year after the purchase, suicide accounted for 24.5% of all deaths and 51.9% of deaths among women ages 21 - 44. And for the next five years, the risk of committing suicide with a gun remained at least twice as high for the handgun purchasers as for the general population.

"Our study found that gun buyers are at particularly high risk for committing suicide within a week after they acquire their guns," says emergency medicine physician Garen Wintemute, professor of epidemiology and preventive medicine at UC Davis School of Medicine and Medical Center and lead author of the study. "And they remain at increased risk for years afterwards." These findings were reported in the November 18, 1999, issue of the New England Journal of Medicine.

"The public's attention predominantly has been focused on gun homicides, but in reality, there have been substantially more gun suicides in most years than there have been gun homicides. People tend to hide gun suicide because it can be a shameful act for the survivors," according to Wintemute. The National Vital Statistics Report documented 17,566 suicides by firearm compared with 13,522 homicides in 1997, the last year for which statistics are available.

In Pierce County, the firearm suicide rate is higher than the firearm homicide rate. For the past 20 years in Pierce County, the suicide death rate has been higher than both the national and state rates. Washington State Department of Health, 1992 - 1996 data for Pierce County indicate there were almost twice as many deaths from suicide as from homicide. The data for the Key Peninsula are comparable.

The UC Davis study also highlights a little known fact that women who buy guns are particularly at risk for death from gun violence. The study found a large difference between men and women in terms of risk from suicide or homicide. Of all handgun purchasers who committed suicide by firearm during the six-year study, 25% of the women and 13.7% of the men did so within a month of buying their handguns.

Firearm suicide accounted for 31.2% of all first-year deaths among women who purchased handguns in California during 1991 - 92. The group most at risk from suicide appears to be younger women who are also the most likely to purchase handguns. Among women ages 21 - 44, more than half (51.9%) of all first-year deaths were suicides, and 37% were firearm suicides.

The findings for women suggest that many may purchase handguns for protection against violence and that these handguns are used against them or are at

any rate not protective. Study author Wintemute states, "We found in some cases, nearly 40 times as many suicides among women who bought handguns as we expected. Their risk for dying from gun homicide was doubled as well."

For additional information on gun safety or information about violence prevention activities contact the Tacoma - Pierce County Health Department at (253) 798 - 7674.

Seminar On Roses

On April 15th at 1:00 PM Terri Gordon will be coming to Sunnycrest Nursery to give tips on caring for roses. She is the developer of TEROSA ROSE FOOD and other products.

Evergreen Gets A Lesson In Safety

by Hugh McMillan

Recently, Evergreen Elementary students learned how to live with bear and cougars. They also learned that, if they see a firearm, they should stop, walk away and tell an adult. If they can't find an adult, they should dial 9-1-1. The lessons were delivered by Ted Jackson, a Washington Department of Fish and Wildlife officer, and Robert Elliott, a volunteer hunter safety chief instructor. Part of their presentation included a seven minute animated film.

Jackson brought a stuffed cougar which he explained had been killed in a highway accident. He also has some pelts for the children to inspect.

Elliott, who put the program together out of his concern for children's safety, lauded Jackson, "who was willing to take time from his very busy schedule to help with this pilot program; we hope to do many more."

The Washington Department of Fish and Wildlife is committed to the education of the public on fish and wild life as well as the protection of wild life and its habitat. The Department is committed to hunter safety and provides a course which is required by the State of Washington to get a hunting license. Robert Elliott credited Barb Wakefield for inquiring about programs we have at the Department of Fish and Wildlife and for helping us all to put this pilot program together.

For further information, contact: Barbara Wakefield at 884-3606, huntered@dfw.wa.gov or ElliRobert@aol.com.

SPRING AT SUNNYCREST



BLOOMING RHODENDRON & AZALEAS

A NORTHWEST FAVORITE

GALLON SIZE, MANY VARIETIES & COLORS

\$5.95 ea. or 3/\$14.95

MANY OTHER SIZES & VARIETIES ALSO AVAILABLE.

PERENNIALS & HERBS

4"-\$2.39 10 or more **/\$2.19**

Over 300 Varieties
Beautiful, healthy plants.

ANNUALS

Fuchsias
Geraniums
Snapdragons
Petunias
much more

WHITNEY FARMS

25 Pound

ORGANIC LAWN FOOD

\$14.95

Covers 2500 sq. ft.



COMPLETE LINE OF ORGANIC
FERTILIZERS & SOILS

Terri's Tips For Growing Beautiful Roses Seminar

Terri Gordon, developer of
TEROSA, will tell us
everything - Free!

1/2 Wine Barrels

CALIFORNIA'S FINEST
Great for deck planters
and small ponds.



\$34.95 ea.
Limited Supply

LARGE SELECTION OF
OTHER PLANTERS TOO!
CEDAR * TERRA COTTA *
MALAYSIAN POTTERY

EASTER SUNDAY IS APRIL 23rd

- * Easter Lilies
- * Spring Bulb Pot
- * Holiday Floral Designs
- * Cards
- * Gifts



SUNNYCREST

NURSERY & FLORAL

884-3937

OPEN EVERYDAY
BANK CARDS WELCOMED



LOCATED IN KEY CENTER

COUGAR CORNER

By Cheryl Force

Students at Key Peninsula Middle School make us proud!

Mr. McWhirter, KPMS wrestling coach leads the round of applause. Congratulations to all wrestlers for a great season. On March 7, KPMS hosted the Year End Tournament. Ten students from KPMS made it to the finals. These champions are: Tim Handy-95lbs, Brandon Pierce-100lbs, Akoni Omega-105lbs, Jake Friedman-110lbs, Bruce Hubbard-130lbs, Danny Coonan-137lbs, Josh Hasbrook-154lbs, Adam Goddard-unlimited. Second Place Finish Winners are Ryan Oswalt-164lbs and Charlie Payne-unlimited.

The Leadership Students attended a conference on March 9 titled, STAR Leadership. Highlights were learning new skits, themes, dances and cheers that build school spirit. Dress codes were also discussed.

The ASB has decided to have a Cougar Pride Day the first Friday of every month. Students, teachers and visitors are encouraged to wear Red, White and Black to show their school spirit. Also planned is a Middle School Food Drive which is scheduled to start March 27-April 7th. The goal is to collect 3,500 cans/packages of nonperishable food between Kopachuck, Harbor Ridge and KPMS. So "LEND A HAND-BRING A CAN!"

Students of the Month nominated in the Category of Courage were recognized at an assembly, March 29th. Jazz Band performed. Congratulations to: Lynette Mann, Mano Demoss, Heidi Lally, Austin Bailey, Sara Rozell, Lauren Hay, Sariah Hubbell, Stanley Nietupski, Erik D'Hulst, Michelle Burch, Richard Alvillar, Jeff Thompson, Andrea Mora, Brent Hannam, Aurora Weaver, Liz Cox, Alex Popkov, Derek Roberts, Johnny Johnson, Logan Gazabat, Diana Taylor, and Paul Demoss.

Miss Mansfield would like to acknowledge the achievement of the students that participated in the Commencement League Band Solo and Ensemble contest on March 11, at Stadium High School. All 36 performers scored in the top two ratings. Students that received EXCELLENT: Kori Pepper, Eric D'Hulst, Justin Schaefer for flute solos, Alan Pepper for alto sax solo, Kori Pepper, Caitlin Kezele and Reanna LaCasse for clarinet solos, Michelle Kelly for tenor sax solo, Sandy Viers for an oboe solo, Carl Anderson, David Doolittle, Heidi Lally and Curtis Haynes for trumpet solos. Mano Demoss, Paul Demoss and Mike Atwater for a Brass Trio, Paul Demoss for a trombone solo, Spencer Drolette, Bjorn Karlson and Aaron Menkens for a mixed trio, Ben Rasmussen and Tommy Heard for snare drum solos.

Students who received SUPERIOR are: Haley Masbruch for a flute solo, Kori Pepper, Jennifer Hoepfner, Caitlin McCourt and Sudha Borys for flute duets, Spencer Drolette, Chris Roe and Nicole Noguez for alto sax solos, Jacq Thygesen, Michelle Burch and Jennifer Schenk for clarinet and bass clarinet solos, Kori Pepper, Matt McPherson, Katy Six, Heidi Lally, Tommy Heard and Carl Anderson for mixed duets, Aaron Menkens, Mano Demoss and Bjorn Karlson for trumpet solos and Brett Lodholm for a baritone solo. Congratulations to all!

The PTA met on March 15. Principals announced that activities are being organized to welcome incoming 5th graders to KPMS, discussions regarding ways to recognize Honor Level 1 students are in process and plans for the 8th grade moving on ceremony are underway. District Parent Council rep reported that a new summer school model is being organized by Tom Worlund. Remedial classes will be conducted at each of the

schools starting in August. The Summer Adventure program will be held at Gig Harbor High School, June 26-July 27th. Teachers and community members interested in teaching a class, please contact the district office as soon as possible. Lastly, the current PTA board of Barb Trotter, Cindy Knisely, Jane McCourt and Suzette Gould have provided wonderful leadership this past year. They are seeking people interested in serving on the PTA board for next year. If interested, contact the nominating committee through the school office. There will be no PTA meeting in April.

TACOMA NEWCOMERS' CLUB COVERS ALL OF PIERCE COUNTY

Tacoma Newcomers' Club features monthly luncheons at local sites, Socials, Lunch Bunch, Book Discussions, Bridge and other Games, as well as outings and sightseeing trips. COME!! Meet new friends, learn about the area and enjoy good company...

We usually meet on the 2nd Thursday of each month: Social at 11 am, Lunch at Noon. Next meeting: Thursday, April 13, 2000—"SPRING FASHIONS 2000" at La Quinta Inn, Tacoma (Behind Tacoma Dome).

Call Barbara at 253-752-1009 for further information.



Brookside Veterinary Hospital

Come visit our new facility at 13701 118th Ave. NW

- Quality medicine/surgery
- Complete in-house lab
- Full flea/skin care
- Microchipping available
- Dentals
- Behavior consultant
- Drop offs/farm calls
- New clients welcome

EXTENDED EVENING HOURS: 5 P.M.-8 P.M. WED.

Lisa Woods, DVM

(253) 857-7302



Gaye Williams

"Always a beautician.
Sometimes a magician."

884-2003
8912 Key Peninsula Hwy N
Lakebay, WA
98349



Bob Cell Services
Gen. Contractor Services
Rock Walls
Waterfalls
Ponds
Irrigation



Tove & Melissa
P.O. Box 440
Vauhan, WA 98394

Business (253) 884-1967
Cellular (253) 229-2732

Licensed
Insured
& Bonded
Regist. #
DETLOD01060

Support Your Local Businesses

Peninsula WINDOW CLEANING

& Gutter Cleaning

QUALITY GUARANTEED - EXCELLENT REFERENCES

CALL FOR A FREE BID

Rob Orth 884-5510

LIC/BOND/INS

DR-EY-EI-167M3

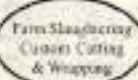
ROSIE ROSENBAUGH
INTERIOR DESIGN



P.O. Box 190
6880 Kimball Dr.
Gig Harbor, WA 98335

800-443-9865
253-851-8326
Fax 253-851-5066

FARMER GEORGE'S MEATS PORT ORCHARD



Farmer George's Meats
3679 Bethel Rd. S.E. Port Orchard



HOMEMADE
SAUSAGE
HAMS &
BACON

(360) 876-3186

AFFORDABLE HONEST CARPENTER 40 YEARS OF EXPERIENCE MY SPECIALTY "CUSTOM TILE"

Remodeling
Framing
Decks
Finish Work
Custom Homes
HOME IMPROVEMENTS
mkelb@earthlink.net

KELBAUGH'S
CUSTOM
CARPENTRY

Michael Kelbaugh
253-884-6048
Lic. #KELBACC0160Z



Support Your Local Businesses



Almost Home Boarding Kennel



Extra Large Kennels
Personal Attention
Hours: 8:00 AM to 6:00 PM

(253) 884-2633

Sandy - Nancy in Lakebay, WA



Ryan Andresen

Domestic & Imports Black Forest Automotive

15317 Key Peninsula Highway
Gig Harbor, Washington 98329

(253) 884-3431

Hypnotherapist
Guided Imagery
Reiki Master
Regression Therapy

253 • 884 • 6048
miketam@earthlink.net

Longbranch Mercantile

OPEN 7 DAYS A WEEK
9:00 AM to 9:00 PM

- * Gourmet Meats & Produce
- * Full Line of Beer & Wine
- * Specialty Sausage

884-1814

DELMER AND MAVE



HOME FEED & GROCERY

MONDAY through FRIDAY 8 AM to 10 PM
SATURDAY 9 AM to 10 PM
SUNDAY 9 AM to 9 PM
ALL HOLIDAYS 10 AM to 6 PM

Corner of 4th & KPN, Lakebay, WA 98349
(253) 884-2321



Shawn Harrington, EA

Income Tax - Bookkeeping - Payroll
Lakebay, WA

Shawn@versatax.net
www.versatax.net

By Appointment
(253) 884-1133

Enrolled to Represent Taxpayers Before the Internal Revenue Service
Authorized IRS Electronic Filing Provider

COMPUTING TECHNOLOGY INDUSTRY ASSOCIATION
Certified A+ Service Technicians

- * PC Repairs
- * Minor Upgrades
- * PC Cleaning and Tune-ups
- * House Calls

Jay Wilford
CompTIA
A+ Certified PC Technician

Phone: 253-884-2831
Email: pcjay@windupring.com



Pierce County
Office of the County Council

KAREN BISKEY
Councilmember, District No. 7

830 Tacoma Avenue South, Room 1046
Tacoma, Washington 98402-2176

(253) 796-0654
(800) 992-2456
FAX (253) 796-7500

Septic Systems • Underground Unleaks • Site Preparation
Dump Truck Services • Road Building • Land Clearing
Slump Barring • Hauling

ABBA

John J. 18 1 John S. 12

Backhoe & Dozing, Inc.

(253) 851-4067
BBAB106308

Perm. & Road
Licensed & Bonded

Pierce & Kitsap Counties

P.O. Box 875
Wauke, WA 98366

(253) 884-2961
(253) 851-2690



Harbor Furnace SERVICE & INSTALLATION

TOM WILLIAMS

P.O. BOX 142, Lakebay, WA 98349
P.O. BOX 1, Gig Harbor, WA 98325

Gig Harbor Regional Telephone Directory

Widely used in
Gig Harbor &
Key Peninsula



call for info on advertising
858-5158

John C. Scott
REAL ESTATE PROFESSIONALS

Ask us about our
"Thank You"
gift to you.
One year passport
membership card.
Unlimited use
Buy one meal -
Get one meal FREE!

Valerie & Tracy Ord

Marketing Specialists

Voice Mail: (253) 858-1315 or

(253) 858-1331

Evenings: (253) 884-4173

E-Mail: tracyo@johnscott.com

Internet website - instant listing with pictures

Full home warranty on every home we list

Double the service - commitment with 2 agents

CALL US NOW !!!

Key to Learning Childcare



in Key Center
(253) 884-1184

Nurturing the skills to succeed in school...and life.
20 years licensed childcare, references provided.
Preschool and meals included.

Helen Macumber

*Located 1 minute from light in Key Center



Commercial BUILDING MAINTENANCE INC.

Dust free hardwood floor refinishing and
prefinished wood and laminates installed.

P.O. Box 505, Gig Harbor, WA 98335

253-853-6686

www.cbms-corp.com

WA ST Contractor's Lic. # COMMEBM044DM

BULLDOZING
BACK-HOE
LOGGING

GRAVEL AND FILL DUMP
LOG BULKHEADS
SITE PREP



JOHNSON BULLDOZING CO.

LAKEWAY, WASHINGTON 98349
PHONE (253) 884-2342



DAVE JOHNSON
(253) 884-3330



PHIL JOHNSON
(253) 884-2889



YESTERDAY'S TEENAGERS!

Key Peninsula Senior Society
by Jim Nolan
Phone: 851-4847

Now that primary politics have eased off somewhat we can safely say that the Senior Survey last month agreed with the national results which gave the delegate wins to: Democrats - GORE and Republicans - BUSH. That was what our little poll said, also: remember? This time we have a personal poll. We asked the Seniors: "What ONE Nationality predominated in your Heritage?"

Results: Irish - 9; German - 4; Dutch - 4; Norwegian - 4; English - 5; and all the following had ONE vote each: Swiss, Scottish, French, Russian, Welsh, Finnish and, if the truth were known, most of us are a Heinz-57 mix, don't you suppose?

Incidentally! Do any of you readers want to know MORE about the KP Seniors? Got ideas for subjects for our monthly Senior Survey? If so ... drop us a line c/o KP News or phone us at the number above. Thanks.

Party Time: Once a month the KP Seniors have a sort of Party meeting on Thursday at Noon. In March it was on March 16th, the day before St. Patrick's. (Was that why so many claimed Irish descent in the Poll?) The decorations by our Secretary, Rose Malmgren, were apropos for the season - green and white. Chuck Williamson, our Treasurer started early, at 8:00 AM, to cook and prepare the corned beef, cabbage, potatoes, carrots - all of which turned out perfectly tasty along with the salads and desserts provided by "pot-luck" members. Sure and begorra, 'twas a great meeting for all.

And we were all pleased to see Lois Sanders, our former Secretary and former Key Center resident, who came to visit with us and brought along her daughter and grand daughter. Lois enjoyed renewing old friendships and said she was sorry she couldn't come more often since she now lives in the Seattle area.

More Party: Our April "special" day will come on Thursday, April 20th, at Noon at the KP Civic Center. The theme: "Easter Week". Erma Dunn, in charge of decorations and arrangements. We'll have a "Brunch" menu, even though it occurs at Noon. Any Senior is cordially invited to this session, no charge, of course. And you're invited to any other Thursday Noon meeting too. We talk, gossip, tell jokes, wash the dishes (Machine), and play Pinochle, Bridge, and other games afterward.

The following stolen for our use by Larry Hagen.

At our age we've made and broken more resolutions than most, so plan to be careful from here on in - and here's a set to follow: 1. If we can't say something good about a person, we'll say nothing. 2. If our life is dull, we'll change it! 3. If there's hate in our heart, we'll cleanse it. 4. If we cannot be positive, we'll forget it. 5. If we can still appreciate and admire beauty, we'll be happy. 6. If we're led into temptation, it will be a miracle.

That's it for now ... see you next month. JOIN KPSS.

APRIL EVENTS at GRACE PRESBYTERIAN CHURCH

A new Bible Study, led by Kay Christianson, begins on April 10. "The Message of Jesus to the Seven Churches in Revelations" will continue on Monday evenings through May 22.

On Palm Sunday, April 16, the Sunday School children will be involved in the traditional procession.

A Christian Passover meal will be held on Thursday, April 20th. This will be a symbolic meal with Christian interpretation. Some traditional foods will be served, with sharing of history, hymns, prayers and communion.

On Easter Sunday, Pastor Jim Christianson will preach.

The choir will sing Bach's Alleluia.

All are welcome. The church meets at Miracle Ranch on Horseshoe Lake, Sidney Road, Port Orchard. Regular worship and Sunday School are at 10:30 a.m. each Sunday. For information, call Pastor Jim Christianson, 857-7284.

KEY CENTER LOCATION OPENING JANUARY 1, 2000

BRINKERHOFF FINANCIAL SERVICES

Tax Services & Accounting

(253) 884-7771

Key Center, (Lakebay)

- * Year-Round Services
- * Affordable Fees
- * Full-Service Tax Preparation
- Individual - Business - Partnership - Corporation
- * Bookkeeping
- * Employment Quarterlies/Year-ends
- * 30 Years Experience
- * Fax Service - Send/Receive

Jack Brinkerhoff

9121 Key Peninsula Hwy North, 98349

(In Windermere Real Estate Building)

T.O.P.S News

by Frankie Johnson

It is that time of year again for our annual T.O.P.S. RUMMAGE SALE !! Saturday, April 8th is the date and starting at 9:00 AM in the Whitmore Room. We know that a lot of you look forward to our sale and have given us great support in the past. This year we plan to have even more and better items to select from. As in the past, we will have generous markdowns the last hour of the sale. However, if you want the best things, come early for the good deals. Watch for our posters and signs to direct you to the Civic Center on April 8th.

Many of you have been following the progress of Colleen Spezia in her journey to her goal weight. She has now taken off 200 pounds! We are SO proud of her. She has less than 10 pounds to reach her ideal weight. Her son, James, has 1 pound to goal at the time of this writing. James has lost over 75 pounds in his 2 years as a member of T.O.P.S. Both James and Colleen have some good stories to tell of surprising old friends.

Other members who are doing very well are Judy Elliott who has lost 19 lbs. in the past couple of months. Helen Schilpp has reached halfway to her goal. Cindy Middleton was our best member last month. Seven of our group lost over 5 lbs. each in the month. Our overall losses were 70 1/2 lbs. for the whole membership. We are really excited and highly motivated to continue our successes. T.O.P.S. gives us incentives and contests all the time to help us want to reach our goals.

We held elections for new officers who were installed March 28. For the coming year Helen Schilpp will be our leader. Susan Henshaw has the position of co-leader. Pauline Longly accepted secretary, and Jena Henak will take on treasurer. Frankie Johnson will remain weight recorder with Dee Paul as assistant weight recorder. We look forward to a very successful year. We want to publicly express our gratitude to our outgoing officers. They did an outstanding job and held office for two years. Carol Bischoff was our leader, and before that was our treasurer. Rosalie Busz has been our co-leader, which means she has filled in for every office when the officer was absent. Jena Henak served as secretary, and Helen Schilpp has been our treasurer. A great big thank you to you all!

In May, our delegates will be traveling to Spokane for the annual State Recognition Days. It is always a fun time with lots of recognition, information and fun. We hope to have some state winners in our chapter. The winners are a secret until announced at the convention.

We welcome new members all the time and urge you to become a member of this active self-help group. Remember T.O.P.S. is non-profit and low cost. Come to the meeting at the Civic Center on Tuesday evening at 6:00 PM or call 884-4102 for more information.



Notice To Our Readers

Please patronize our advertisers. And tell them you read about them in the *Key Peninsula News*!! Their support makes it possible to send the paper to all of you in this far-flung community.



Shawn Harrington, EA

Enrolled Agent

**Income Tax Preparation
for Individuals and Small Businesses**

Bookkeeping

Payroll

Lakebay, WA

Shawn@versatax.net
www.versatax.net

By Appointment
(253) 884-1133

Enrolled to Represent Taxpayers Before the Internal Revenue Service
Authorized IRS Electronic Filing Provider



Key Peninsula "Citizens of the Year" Awards Dinner, April 1st, at 6:00 PM at the Key Peninsula Civic Center

Please Contact any KP Lion, Hugh McMillan at 884-3319, with questions or to reserve tickets. It's time to bring our communities together and this is another way of doing so.

Country Corner
Using ISO Perms *Salon*
"For All Your Haircare Needs"

Open Monday - Friday
9:00 AM to 5:00 PM
Saturday & Evening
by Appointment.

14920 82nd Ave. NW
Gig Harbor, WA 98329

Sandy Hackney
857-6250



LuLu's Homeport

Restaurant & Lounge
Hours

Restaurant 6am-9pm
Lounge 10am-2am

884-3743

Home, WA

the TAX SHACK

14203 Purdy Ln. NW
In Purdy

Next to S.A.V.E. Thrift Store

Kathy Hendrickson CTP
John Hendrickson CTP
Tara Hendrickson CTP
(253) 858-1553

Specializing in
Individual and
Small Business Taxes,
Bookkeeping



OPEN
YEAR
ROUND

Serving the
Peninsula
Since 1986

WANTED

DEAD or ???

Items for the Key Peninsula Civic Center's
huge fund-raising Garage Sale on May 6th.

Contact Loyd Miller at 884-2536 or
Kristen Bottiger at 884-5420
if you have something to donate.

Please Note: If any items you donate do not sell,
you MUST take them back.

*Happy Easter
April 23rd!*

CLASSIFIED ADS

FOR RENT:

Newly remodeled 3-Bedroom, 2-Bath home with den, library, playroom, and acreage. Must see to appreciate! Low rent for desirable tenant. Jackson Lake Road, near Sportsmen's Club. Please call 884-4522 to leave word of interest.

FOR SALE:

Used 15 ft. boat trailer and large dog house. Best offer.
253-857-7252.

Bobcat Loader & Contractor Services. Detloff Designs Remodels, Decks, Greenhouses, Fences, Rock Walls, Ponds, Irrigation. Licensed, Insured and Bonded. Reg. #DETLOD X010MO. 884-1967

KEY PENINSULA BAPTIST CHURCH. Meeting Sunday mornings at Key Peninsula Civic Center in Vaughn. Bible Study 9:30 AM, Worship Service 11:00 AM, Wednesday AWANAS 6:45 PM. Pastor James Rouse - Phone 884-9994.

DEADLINE for the KP News classifieds ads is the 20th of each month, call 884-4699 to place your ad.

S.A.V.E. Thrift Store

GREAT NEW MERCHANDISE

All clothes and shoes
Proceeds go toward academic
and vocational scholarships for
PHS students
DONATIONS ACCEPTED
OPEN: M-Tu-Th-F-Sat
10:00 AM - 4:00 PM
CLOSED: Sun. & Wed.
857-2800

WATKINS PRODUCTS are available, call Marvin and Myrtle Keizur at 884-3566. VISA/MC.

DOG OBEDIENCE CLASSES

KP Civic Center, start Jan 18,
7 p.m., Cathy (253) 857-6758

ANGEL GUILD THRIFT STORE, K.C. Corral, 10 AM to 4 PM Wednesday through Friday. Saturday - 11 AM to 3 PM. In store specials weekly. All proceeds benefit the Key Peninsula. 884-9333.

HELP WANTED

CAPITOL LUMBER in Key Center is looking for experienced outside yard help/Loader. Current WSDL, F/T, Benefits. Apply at store location.

PARENT VOLUNTEERS NEEDED for Friday Night Skate! Skate for free, lite set up & clean up. Contact Lila at 6:00 PM on Fridays at the KP Civic Center. Have fun & enjoy your children!

**ADVERTISE IN THE
KEY PENINSULA NEWS
CALL BOB STACKHOUSE
AT 884-4699**

VOLUNTEERS NEEDED with the following skills or interests: birdhouse building and simple woodworking, gardening with children, data entry, resource library organization. Please call soon if this describes you. Children's Home Society Key Peninsula Family Resource Center, 884-5433.

CHAINSAW AND LAWNMOWER REPAIR. Over 20 years experience. Reasonable labor rates, pick up and delivery available. Call 851-4628.

COUNSELING OFFICE OF

Lori Ann Brudvik Lindner, R.C.
Individuals/Couples/Teens
Eating Disorders
Key Pen Health Cntr & Tacoma
Fee Adjustable
756-5060

APPLEBY PLUMBING & DRAIN

Service, Repairs, and Remodels,
Hot Water Tanks.
(253) 884-9827.

SERVICES

Peninsula Marine, certified marine technician, inboard, stern-drive, outboard service and repair at your door or at your dock. 253-884-5217.

KEY TO LEARNING CHILDCARE in Key Center. AM Preschool openings. Full or Part Time care. Activities, structure, huge playground! Meals. Helen at 884-1184.

**Piano Lessons For Young
Beginners. Reasonable**
(253) 857-7252

**AVON PRODUCTS
STOCK ON HAND
OUR HOME OR YOURS**
884-4149
JANE ALBRECHT

The Garden In April

by Sylvia Retherford
(253) 884-2487



Daffodils, narcissus, jonquils, tulips and other spring bulbs are at their best. In the wild garden three species of Trillium are a pleasure: 1. T. ovatum with white flowers on a short stalk (peduncle) above the leaves, 2. Giant trillium (T. chloropetalum) which has no stalk above the leaves (sessile) and 3. red trillium (T. erectum) which is native in the eastern U.S. forests. Wild red current (Ribes sanguineum) and white flowered Indian plum (Osmaronia cerasiformis) are in full bloom and some are past.

Yellow avalanche lilies (Erythronium parviflorum), dog-tooth violet (E. giganteum) with brown mottled leaves and E. montanum with unmottled leaves are about 8 inches tall. Checkered or chocolate lily (Fritillaria camtschaticensis) are native to the San Juan Islands but do well here. Both evergreen black huckleberry (Vaccinium ovatum) and red huckleberry (V. parvifolium) are busy shedding pollen to assure a good fruit crop.

Both wild and domestic rhododendrons are in full bloom. Lily of the valley shrub (Pieris japonica), both creamy and red varieties are close to the similar shrub, Skimmia japonica with its white blossoms. White star magnolia (M. stellata), now a glorious cloud of white, and M. soulangiana (deep pink) are small trees that bloom early.

Buds of Washington's only wild apple (Pyrus rivularis) are unfolding. This charming little tree is rare but if you find one, cuttings and seeds from it will help you have one of your own. It has white flower clusters in spring followed by scarlet marble-sized fruits that decorate the tree all winter.

Annuals from seed have a ways to go, but there is a relatively new annual, Cerinthe major (purpurascens), that behaves as a perennial in our area. It is about a foot tall with gray foliage, purple blossoms and seeds itself profusely. Another unusual shrub is cape fuchsia (Phygelius capensis). It occurs in white, yellow and several pinks and is not a fuchsia, but a relative of snapdragon looking a little like fuchsia.

Tomato seed can be planted now in pots on a sunny window sill to be put out in mid-

May. Some people support the vines and others just let them sprawl. They produce either way but take up more space sprawling. Some experts claim they are less subject to disease when tied up. Tomato blight sometimes strikes in a damp August. Covering plants with plastic to keep them dry, can allow late fruit to ripen.

KEY PENINSULA CIVIC CENTER ASSOCIATION 2000 COMING EVENTS

CITIZENS OF THE YEAR BANQUET	April 1st
TOPS RUMMAGE SALE	April 8th
ANNUAL EASTER EGG HUNT	April 23rd
RENO NIGHT	April 29th
SPRING BAZAAR	May 6th
PROHIBITION JAZZ DANCE	June 3rd
VFW/KPCCA FIREWORKS DEMO	June 25th
FIREWORKS BOOTH SALES	June 29th
PIONEER DAY	August 5th
ART AUCTION	?
ROADSIDE ANTIQUE SHOW	September 9th&10th
HALLOWEEN PARTY	October 31st
HOLIDAY ARTS & CRAFTS SHOW	November 18th
VFW THANKSGIVING DINNER	November 23rd
SALATINO'S CHRISTMAS DINNER	December 25th

April 2000



KEY PENINSULA CIVIC CENTER

SUNDAY	MONDAY	TUESDAY	WEDNESDAY	THURSDAY	FRIDAY	SATURDAY
<p>WANT TO VOLUNTEER AT RENO NIGHT... Call 884-3600</p>						
<p>2 KP BAPTIST 9:00 AM IMPACT DINNER 3:00 FAMILY SKATE 3:30-5:00 SCOUTS "Arrow of Light" 5:30</p>	<p>3 CENSUS 1:30-4:30 KARATE 7:00 PM</p>	<p>4 WIC 7:30 AM INDOOR PARK 9:30 LTL BUDDIES 3:45 SCOUTS & TOPS 6:00 DOG OBEDIENCE 7:00</p>	<p>5 DANCE Creative Movement 3:00 Tap/Jazz 3:45 HEALTHY FAMILIES 10:00 CENSUS 1:30 LIONS CLUB & AWANA 6:30 BIBLE STUDY 7:00</p>	<p>6 INDOOR PARK 9:30 SENIORS 10:00 MUSEUM 1-4:00 PARENTING 7:00 KARATE 7:00</p>	<p>7 TRIBAL DANCE 10:00 AM HOME SKATE 2:00 SKATE NIGHT 6:30-9:00</p>	<p>1 TCC Drawing/ Tapestry 10:00 MUSEUM 1:00-4:00 LIONS CLUB CITIZEN OF THE YEAR 6:00</p>
<p>9 KP BAPTIST CHURCH 9:00 am IMPACT DINNER 3:00</p>	<p>10 CENSUS 1:30-4:30 VFW and AUXILIARY 7:00 PM KARATE 7:00</p>	<p>11 WIC 7:30 AM INDOOR PARK 9:30 CHILDREACH 9:30 LTL BUDDIES 3:45 SCOUTS & TOPS 6:00 DOG OBEDIENCE 7:00</p>	<p>12 DANCE Creative Movement 3:00 Tap & Jazz 3:45 TCC Yoga 1:00 CEN- SUS 1:30-4:30 AWANA 6:30 BIBLE STUDY 7:00</p>	<p>13 INDOOR PK 9:30 SENIORS 10:00 CHS 1:00 MUSEUM 1-4:00 PARENTING 7:00 KARATE 7:00</p>	<p>14 TRIBAL DANCE 10:00 AM HOME SKATE 2:00 SKATE NIGHT 6:30-9:00</p>	<p>8 TOPS RUMMAGE SALE 9:00 MUSEUM 1:00-4:00 CENSUS 3:00-6:00</p>
<p>16 KP BAPTIST CHURCH 9:00 am IMPACT DINNER 3:00 FAMILY SKATE 3:30</p>	<p>17 KARATE 7:00 PM</p>	<p>18 WIC 7:30 AM INDOOR PARK 9:30 SCOUTS 6:00 TOPS 6:00 DOG OBEDIENCE 7:00</p>	<p>19 DANCE Creative Movement 3:00 Tap & Jazz 3:45 LIONS CLUB 6:30 AWANA 6:30 BIBLE STUDY 7:00</p>	<p>20 INDOOR PK 9:30 SENIORS 10:00 MUSEUM 1-4:00 KARATE 7:00</p>	<p>21 TRIBAL DANCE 10:00 AM HOME SKATE 2:00 SKATE NIGHT 6:30-9:00</p>	<p>15 MUSEUM 1:00-4:00</p>
<p>23 KP BAPTIST CHURCH 9:00 am IMPACT DINNER 3:00 EASTER EGG HUNT 1:00</p>	<p>24 ANGEL GUILD 11:00 VFW and AUXILIARY 7:00 PM KARATE 7:00 PM</p>	<p>25 WIC 7:30 AM INDOOR PARK 9:30 LTL BUDDIES 3:45 SCOUTS & TOPS 6:00 DOG OBEDIENCE 7:00</p>	<p>26 DANCE Creative Movement 3:00 Tap & Jazz 3:45 TODDLER ART 10:00 TCC Yoga 1:00 AWANA 6:30 BIBLE STUDY 7:00</p>	<p>27 INDOOR PK 9:30 SENIORS 10:00 MUSEUM 1-4:00 KARATE 7:00</p>	<p>28 TRIBAL DANCE 10:00 AM HOME SKATE 2:00 SKATE NIGHT 6:30-9:00</p>	<p>22 MUSEUM 1:00-4:00 PRIDE OF CIVIC CENTER WORK DAY AND POT- LUCK 10:00</p>
<p>30 KP BAPTIST CHURCH 9:00 am IMPACT DINNER 3:00</p>						<p>29 TCC Worm Bin Class 10:00-12:00 MUSEUM 1:00-4:00 RENO NIGHT 5:00-12:00 Midnight</p>

Pierce County Council Meeting has been scheduled for Tuesday, May 2, at 7:00 pm in the Whitmore Room at the Key Peninsula Civic Center. Immediately following the Council meeting, there will be a **Town Hall Meeting** regarding the problem of Meth Labs in Pierce County. Information will be provided by staff from the Pierce County Sheriff's office and Tacoma-Pierce County Health Department on the subject (see notice elsewhere in paper).



Key Peninsula Water Festival

Water is the Keyneccion

A two day festival is being planned for Friday, May 19th and Sunday, May 21st to celebrate and educate citizens on the Key Peninsula about our local water resources. On May 19th, fourth and fifth grade students from Evergreen, Vaughn and Minter Schools will participate in educational activities at YMCA Camp Seymour and will attend field trips to the Minter Fish Hatchery, Rocky Creek, and the Key Peninsula Historical Museum. The students will learn about the value of water from a variety of perspectives—Puget Sound marine life, aquatic organisms found in Peninsula streams, threatened salmon species, and our own drinking and household water consumption.

On May 21st the Key Peninsula community is invited to attend the festival from 11:00 AM to 3:00 PM at Camp Seymour. Exhibitors from state and local agencies, businesses, and environmental groups will have information and advice on how to protect our local water resources with proper septic system maintenance, wellhead protection, landscaping practices, a community vision for parks, and land trusts. Camp Seymour will open their aquarium and provide opportunities to canoe or kayak around Glen Cove. In addition to the educational activities, there will be good music, food, games, and a drawing to give away prizes including a truck load of compost, native landscaping plants, and a worm bin.

Funding for the water festival is being provided by the Washington State Department of Ecology, Pierce County Environmental Services, Washington Water Company, and Peninsula Light Company.

Citizens and representatives from YMCA Camp Seymour, the Friends of Rocky Creek, South Puget Sound Salmon Enhancement Group, Pierce County, Steilacoom Beach Rangers, Peninsula Heritage Land Trust, Pacific Coast Oyster Growers Association, Peninsula School District, Pierce Conservation District, and the KGI Watershed Committee are coordinating the event. But more help is needed; if you would like to become involved, please contact Mary Knackstedt at 253-798-4660.

Key Peninsula Parks And Recreation District News

by Nancy Lind

The Park Board met at 7:00 PM March, 13 at Volunteer Park Annex. Fred was in Hawaii and Nancy was sick so it was a short board and probably a short meeting.

Volunteer Park

* If you've been driving by Volunteer Park lately, you've been seeing lots of little rugrats running around with mitts and bats. Little League has started and it's always a sure sign of spring.

* Scheduling starts on the 8th of April

Rocky Creek Conservation Area

* Neighbors who walk the site on a regular basis call Nancy to report garbage dumping, vehicles using the area improperly, and other inappropriate activity. One garbage dumper left a name and address in their pile and they will be contacted. Friends of Rocky Creek are on the alert to get this disgusting habit stopped and will put together a form letter to send off to these hapless people.

* On March 20, the crew from WCCW cleaned up more garbage.

* Earth Day, Sat. April 22 at 10:00 AM, will have these activities going on and if you'd like to participate in some specific project, let us know. Call Nancy Lind, 884-3347.

1. Put up "No Motorized Vehicles" signs at the creek. 2. Make trails. 3. Clean trailhead site. 4. Plant trees. 5. Drive to west side of stream to clean up. 6. Pick up garbage. 7. Put up bird houses if they're ready. 8. Clear stream overlook sites. 9. Put up cedar entrance sign.

*The Newsletter comes out in April and October. If you'd like to receive a copy, call Jan Piercy at 884-2496.

Questions & Answers Financial Focus

Tax Season

Submitted by Connie R. Rose

Understanding Your Rollover Options

Are you retiring soon? Changing jobs? Leaving your company? If so, you're probably faced with a big decision: What should you do with the money in your current employer's retirement plan?

In general, you have two options when you receive a distribution from your employer's retirement plan: 1. Take the money; or 2. Roll the money into another retirement account.

Take the Money

You can elect to have your retirement plan distribution sent to you. If you do, 20 percent will be sent to the IRS up front and will be applied to your taxes when you file your return. So, if you are in the 28 percent tax bracket, you will owe an additional 8 percent at tax time. On top of that, if you are under age 59-1/2, you may be subject to a 10 percent early withdrawal penalty. An exception to this penalty applies if you are age 55 or older in the year you separate from service.

Example: Mary is 52 and retires from ABC Co. She is in the 28 percent tax bracket. Mary decides to have her 401 (k) balance of \$150,000 sent to her. She will be subject to income tax, 20 percent withholding and the 10 percent early withdrawal

penalty. 401 (k) balance - \$150,000; 20 percent withholding - \$30,000; Remaining taxes (Mary is in the 28 percent tax bracket) - \$12,000; 10 percent early withdrawal penalty - \$15,000; Amount left to invest - \$93,000.

Roll It Over

You can avoid paying taxes on your retirement plan distribution if you roll the money into an Individual Retirement Account (IRA). You will not be subject to taxes until you need to start withdrawing money from your IRA. If you don't need to take income from the IRA right away, the money will continue to grow tax-deferred.

Example: What if Mary instructs her employer to send her 401 (k) balance to her IRA rather than taking the money? Because the money is being sent directly to Mary's IRA (a direct rollover), the employer is not required to withhold federal income tax. 401 (k) - \$150,000; taxes/withholding - \$0; 10 percent early withdrawal penalty - \$0; Amount available to invest in the IRA - \$150,000.

If Mary needs money prior to age 59-1/2, she can take systematic withdrawals from her IRA without the early withdrawal penalty. She must, however, take withdrawals of the same amount every year for five years of until she is age 59-1/2, whichever is longer.

Retirement is an exciting time in your life. Don't spoil it by making an uninformed decision. Your investment representative can help you determine which option is right for you.

Vaughn Bay Garden Club

Kerry Jamieson, Master Gardener, presented an interesting program on "Gardening Then and Now" for the February meeting of the Vaughn Bay Garden Club. Mr Jamieson's grandmother, Esther Harriman, belonged to this garden club for many years. Jamieson shared excerpts from Mrs. Harriman's diary from 1945 through 1954 regarding her participation in the club. One entry noted that the hostess was Elsie Olson, currently our only charter member still involved. Photos of the Harriman gardens, at Olman Point and farther south along Crescent Beach Road, were also shown.

In March, Tim Kezele presented an interesting program on growing and dividing perennials, with many members taking home the results.

The April 19th meeting will be at the home of Colleen Slater, with Cathlee James as co-hostess. Peggy Dervaes and Joyce Niemann will present a program on Sedums. Members are reminded to bring plants for the annual plant sale. For more information, call 884-5403.

When you retire,

**I can make sure you
miss your job more
than you miss your
paycheck**

Social Security has certainly seen better times. And who knows what the future might bring. I can show you how to plan for a secure financial future, with or without Social Security.

**Call or stop by today for
details.**

Edward Jones
4423 Pt. Fosdick Dr. NW, Ste 100
Gig Harbor, WA 98335
253-853-7988



Connie R. Rose
Investment
Representative

www.edwardjones.com

Member SIPC

Edward Jones

Serving Individual Investors Since 1871

Windermere Key Realty

9121 Key Peninsula Hwy N.
Key Center, WA 98349

Located in the heart of Key Center to serve the real estate needs of the Key Peninsula. With excellent technological support and our friendly knowledgeable staff, **Windermere Key Realty** is an excellent choice for all your real estate needs. Stop in anytime to check our display board - get a list of all the listings in the area or arrange for a market analysis for your home or property.

And to browse at home, please check our website @

www.windermere.com.



Windermere
Windermere Real Estate/Key Realty
Office: 884-3304



Great American Gas Out!

Last year on April 30, 1999, a gas out was staged across Canada and the US to bring the price of gas down, and it worked. It's time to do something about it again.

This time, lets make it for three days instead of just one. The oil cartel decided to slow production to drive up gasoline prices. Lets see how many Canadian American people we can get to band together for a three day period in April, NOT TO BUY ANY GASOLINE, during those three days. LETS HAVE A GAS OUT!

Do not buy any gasoline from APRIL 7, 2000, THROUGH APRIL 9, 2000. Buy what you need before the dates listed above, or after, but try not to buy any during the GAS OUT. If you want to help, just send this to everyone you know and ask them to do the same. We brought the prices down once before, and we can do it again! Come on North America, let's stand together.

The Bayshore Garden Club

The Bayshore Garden Club, member of the Capitol District, will meet at the Longbranch Improvement Club on April 21st, 2000.

The following is the agenda:

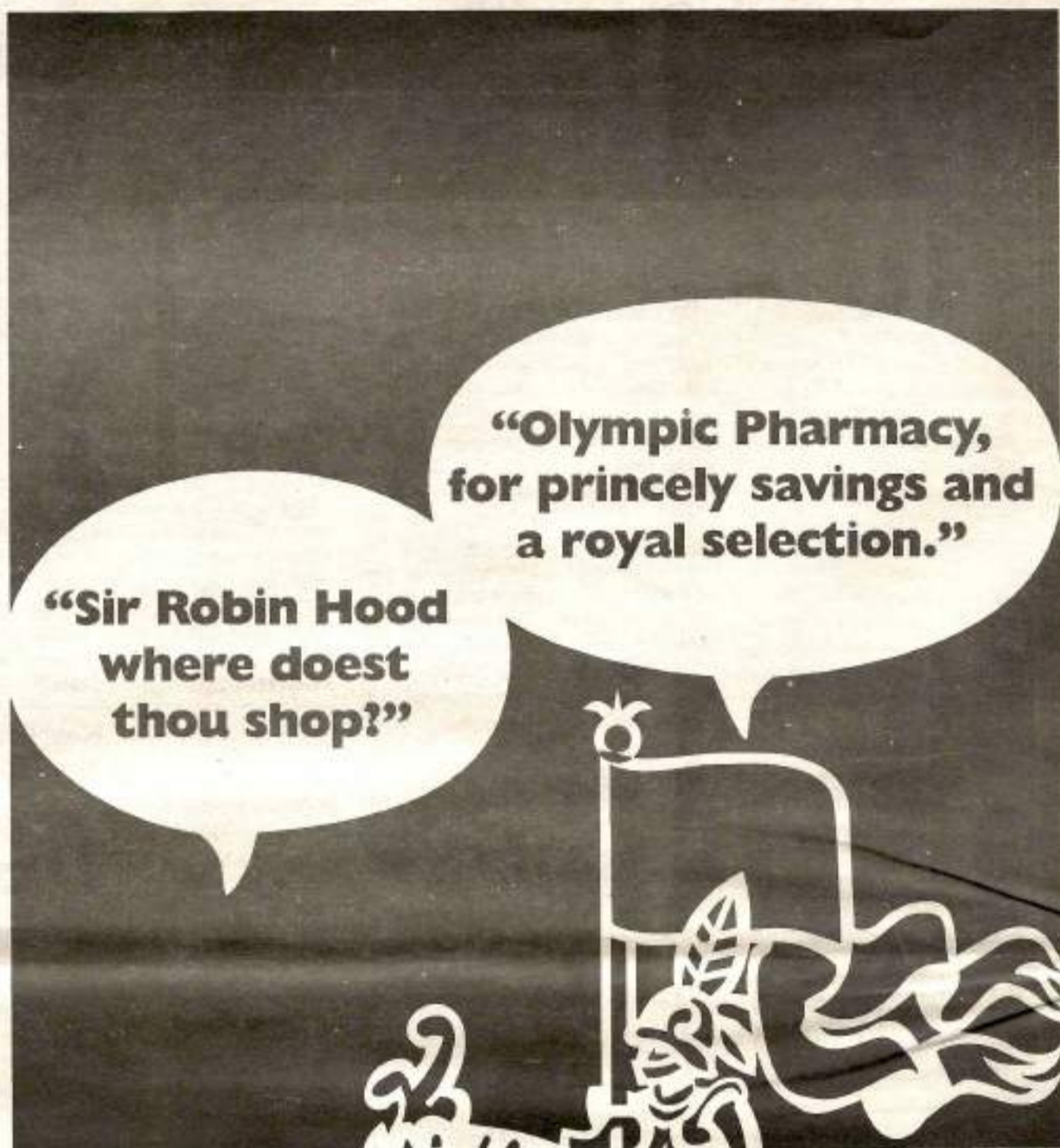
12 noon, Lunch with Hostesses Ruby Hatch and Edith Pinder, 1:00 PM, Design and Arrangement with Jean Humphries, 1:30 PM, Theme Speaker, Anita Dougherty; 2:00 PM - Horticulture/Conservation with Sheila Arnott.

For more information call Sylvia Retherford at 253-884-2487.

KP Sportsmen's Club Breakfast

The Key Peninsula Sportsmen's Club will hold its annual Fishermen's Breakfast at the Jackson Lake Clubhouse on Sunday, April 30, from 7:30 am - 12:30 PM. It's an all you can eat affair featuring juice, coffee, hot cakes, scrambled eggs, breakfast meats, fresh fruit, hash browns, and, in the words of worker bee Ruth Bramhall, "just about anything your heart desires." And all this is but \$4.00; kids under six eat free. There will also be the annual garage sale for folks looking for bargains. Proceeds support the Sportsmen's Club and its charitable activities. Location is 3503 Jackson Lake Road KPN, Lakebay. Questions: 857-5184.

**Easter Is May 23
Happy Easter!**



At Olympic Pharmacy, you'll discover a full range of products to help you feel better. Whether you need pain relief for a headache, to be fit for a new wheelchair, or you're managing a chronic condition, our registered pharmacists and health equipment specialists are ready to answer your questions. You won't need Sir Robin's sneaky tactics to shop at Olympic, either. Our everyday low prices and friendly staff will help you feel simply majestic.



Olympic Pharmacy
HEALTHCARE SERVICES

Just what the doctor ordered.

Prescriptions • Health and Beauty Supplies • Medical Equipment • Prescription Drive-Up

Pt. Fosdick Medical Center • 4700 Pt. Fosdick Dr. NW
Monday - Friday 9 - 7 Saturday 9 - 5
All Major Credit Cards Accepted
(253) 858-9941

www.olympicpharmacy.com