

Key Peninsula  
Community

Entertainment  
Guide

FAIR



JULY 10-13, 2008  
AT VOLUNTEER PARK

Special Supplement of the  
KEY PENINSULA  
NEWS



# Dear friends, neighbors and community visitors

**G**reetings! It is my pleasure to welcome you to the 2008 Key Peninsula Community Fair (KPCF). For the Eighth year in a row, the KPCF will bring together folks from near and far to enjoy and celebrate life here on the Key Peninsula. Our hard-working Board of Directors has spared no effort to bring you this year's array of entertainers and events. They will inspire, entertain and may even enchant you. This year we'll have that same great carnival, and the entertainment lineup will feature "locals." We're putting a little extra effort this year to emphasize the "P" in KPCF. Sunday evening is Polka-Fest!

Over the past seven years, the fair has grown from modest beginnings to an event spanning four days with a little bit of everything for everybody. Come for the music, the rides, vendors, the petting zoo (Agri-Vision), or simply take a break to enjoy lunch. Come and enjoy "your fair." Did you know the fair is a nonprofit entity, there is no paid staff or board members? The fair is yours — come and enjoy it! Afterwards, every penny the fair makes goes right back into the commu-

nity through its owners: the Key Peninsula Business Association, the Key Peninsula Civic Center and the Longbranch Improvement Club.

Every year the fair grows and innovates. Last year we added a wine competition, which will return for 2008. This year we're adding a Farmers Market and moving the Beer Garden next to the main stage. We are improving on what has been a year-to-year improvement process.

We hope that your experience as our very welcome guest is a fun and rewarding one. We are delighted to provide so many opportunities for you to meet and greet old and new friends. As you will see, a great deal of planning and hard work has gone into making this fair one of the best ones ever. But only you can validate our endeavors — your pleasure is both the reason for and the measure of our efforts. *Enjoy the fair!*

*Mike Hays, KPCF president*



## Key Peninsula Community Fair Guide is a special supplement to Key Peninsula News.

Tips for fair-goers .....	3
Fair history .....	3
Teen night .....	4
Musical entertainment ..	5
Main stage schedule ....	6
Map & directions .....	7
Entertainers .....	8
Wine makers.....	9
Happy Hans band .....	10
VFW, petting zoo .....	11
Tractor pull details .....	12

For information:

Key Peninsula News

17010 S. Vaughn Rd.

P.O. Box 3, Vaughn, WA 98394

Phone: (253) 884-4699

Fax: (253) 884-4053

Email: news@keypennews.com

### KP Fair Guide editor:

Colleen Slater

### Executive editor:

Rodika Tollefson

**Advertising:** Debra McElroy,

September Hyde

**Production & design:**

September Hyde

**Contributors:**

Danna Webster, Irene Torres,

Jeanette Brown, Donna Smeall

**Distribution supervisor:**

Phil Bauer

## KEY PENINSULA NEWS

*The voice of the Key Peninsula*

Key Peninsula News is published monthly by an independent publishing board, and is owned by the nonprofit Key Peninsula Civic Center Association in Vaughn, Wash.

Copyright 2008 with all rights reserved. Reproduction of editorial or graphic contents in any manner without permission is prohibited. Annual subscriptions (12 issues) are available for \$25.00 and are mailed first class. Copies are mailed presort standard to residents and post office box holders of the Key Peninsula. Single copies are available at the newspaper office in the basement of the Civic Center annex and at various distribution points located on the Key Peninsula. Approximately 18,000 people live in the distribution area.



### LakeBayNautical

**Home • Beach • Gifts  
Nautical Instruments**



**10% Discount with Ad  
Good thru 08/31/08**

**Olympic Village  
Shopping Center**  
5500 Olympic Dr NW,  
Gig Harbor WA 98335

**(253) 851-3366**  
**www.lakebayproducts.com**

**Asphalt Paving | Excavation | Septic System**

**Serving Gig Harbor & The Peninsula Since 1982**



## COMMERCIAL & RESIDENTIAL

### FREE ESTIMATES

**www.maplewoodconstruction.com**

Driveways ✦ Excavating ✦ Parking Lots ✦ Sport Courts  
Paving ✦ Grading ✦ Crushed Rock ✦ Sub Divisions  
Road Building ✦ Total Site Prep ✦ Side Sewers  
Final Grades ✦ Septic Installation/Repairs ✦  
Underground Utilities ✦ Land Clearing

**253-858-2991**  
**Fax 253-851-2760**

**Licensed - Bonded - Insured**  
# MAPLECI014B6



# What to know before you go

⇒ Parking – \$2 for close-in, observed parking; free behind KPMS

⇒ Admission tickets – \$2; children 5 and under free

⇒ Carnival tickets – ride prices vary. All-day pass \$25 at gate; pre-sale \$20 at Sunnycrest Nursery, Beach Hut and Sound Credit Union in Key Center, includes admission, available until Thursday, July 10.

⇒ Hours – Thursday Teen Night 6 to 10 p.m.; Friday and Saturday 11 a.m. to Midnight; Sunday 11 a.m. to 6 p.m.

⇒ Take map and schedule with you to help you find what you want easily.

## **Tips for families with kids**

⇒ Plan ahead on what to do and see, and schedule tentative time frames. Allow some sit-down time, to watch a show or demonstration, enjoy food, or to just take time out on a bench or bale of hay.

⇒ Set up a meeting place in case people get separated. Cell-phones are good.

⇒ Locate the restrooms ahead of time.

⇒ Take bag or backpack (unless you have a stroller) with water, sunscreen, Band-aids, sunhats, waterless hand cleaner, or baby wipes. If rain is a possibility, include umbrella, rain covers, towel.



⇒ Bring tide-you-over snacks, or cash to buy from food vendors.

⇒ Don't forget a camera (and if you get some really good shots, consider sharing them with KPNews for next year's fair guide!)

⇒ A fabric or canvas bag for carrying all those neat things you and your children might pick up from vendors. Include a bag for garbage, in case you don't spy a can nearby.

⇒ Be a good citizen. Toss your garbage in the proper receptacles instead of on the ground. Containers for recyclables will be available.

⇒ Say thanks to the security people patrolling the area, to the Boy Scouts who collect garbage and run errands, to all of those wearing volunteer tags, for contributing their time and effort to make the KP Fair a great place to spend a day.



## Eighth year for Key Pen event

Eight years ago, three community non-profit groups — Key Peninsula Business Association (KPBA), Key Peninsula Civic Center Association (KPCCA), and the Longbranch Improvement Club (LIC) — joined together to create the Key Peninsula Community Fair (KPCF). Under a common vision, a safe, affordable and wholesome family entertainment venue was created where people can gather to experience the spirit of the community.

These organizations provide many of the volunteers for the fair, and the fair board, representing each group, plans and manages the event. Profits are equally divided among them, so all profits from the fair are returned to the community.

Volunteers in all areas and local sponsors help make this fair a success every year.

The Key Peninsula Community Fair is a family oriented 4-day event showcasing exhibits, entertainment and competitions at the Key Peninsula Sports Center (Volunteer Park).

# ***WE SUPPORT THE KEY PENINSULA FAIR!***

**SPORTSMAN'S WAREHOUSE ~**  
**AMERICA'S PREMIER OUTFITTER**  
**9577 RIDGETOP BLVD #150, SILVERDALE, WA 98383**  
**360-307-6900**

[WWW.SPORTSMANSWAREHOUSE.COM/STORE.CFM?STORENUM=124](http://WWW.SPORTSMANSWAREHOUSE.COM/STORE.CFM?STORENUM=124)





# Karaoke highlight of Teen Night



Photo courtesy Mike Hays

Thursday, July 10, brings Teen Night to the fair, 6 p.m. to 10 p.m. with free admission for sixth grade through high schoolers. Karaoke will operate all evening, and a pizza eating contest will be held. Teens will need spending money for carnival rides, food, beverages, and other items available from vendors.



*Your Safe Harbor For Hearing Healthcare*

*Gig Harbor's exclusive provider of  
**Complete Hearing  
Health Care™***

Hearing Evaluations for Adults and Children  
Comprehensive Fittings and Adjustments  
Hearing Aid Repair and Programming  
Ear Molds: Pilot, Musician and Swimming  
Balance Assesments  
Tinnitus Treatment



**Laura K. Day,**  
Au.D., FAAA  
Doctor of Audiology



**Rachelle Kautzman,**  
M.A., CCC-A  
Clinical Audiologist and  
Doctoral Canidate

*Interest FREE Financing Available*

[www.harboraudiology.com](http://www.harboraudiology.com)

**4700 Pt. Fosdick Drive NW | Suite 212 | Gig Harbor | 253.851.3932**

# \$500 Off First Mortgage Closing Costs.

*We have a program just waiting for you!*

- Fixed rate
- Adjustable rate
- Second or vacation home
- Owner or non-owner occupied

*Make shopping for your home easy with a fast and free pre-approval. Apply online or call us to set up an appointment with a mortgage loan officer.*

**SOUNDCU.COM • (253) 383-2016 • (800) 562-8130**

\$500 off closing costs is a limited time offer and is subject to change at any time. FHA/VA loans are excluded. This promotional offer cannot be used toward down payment or with any other discounts. Must be a Sound Credit Union member to participate. Membership at Sound Credit Union requires a savings account with a minimum balance of \$25. Standard underwriting guidelines apply.





# Musical entertainment highlights

By Irene Torres, KP News

## Blues Passage

Friday 6 – 8 p.m.

The Blues Passage band returns to the KP Fair again this year to the Main Stage. They are a Puget Sound group with a talent for making good blues music. Enjoy hearing KP resident Dan Wilson play a mean guitar.

## Donn Allard & Renegade Train

Friday 8:30 – 11:30 p.m.

Local country artist Donn Allard and his band, Renegade Train, are back at the fair again. On Friday night, they will play a selection of music for listening and dancing. Allard has written a number of original songs. In his trademark white hat, Allard's sense of humor will delight the audience, and the music is guaranteed to tap a toe.

## Swing Fever

Saturday 2 p.m.

On Saturday afternoon, the Big-Band sounds of Swing Fever will take you down memory lane. The soulful voice of Andrea Densley of Shelton is showcased with rich harmonies of the 18-piece band, directed by Stan Yantis of Mason Lake. Band members come from five different counties. The KP Fair is one of Swing Fever's two or three concerts or dance engagements a month. Expect songs of Glenn Miller, Benny Goodman, Les Brown and others to bring back the music of the 1930s to the 1950s.



Little Bill

## Jazz Musette

Saturday 6 – 8 p.m.

Enjoy the jazz music of local artists Jazz Musette as they perform on the Main Stage. This is a six-piece musical combo, with Lorraine Hart, Tom Hume II, Tom Hume III, Mark Runions, Ed Seymore and Anna Hart. Tom, Mark, Anna and Lorraine live on the southern end of the Key Peninsula. Ed and Tommy are from the Tacoma area. Lorraine Hart's blogsite says, "As a performer it's important, first and foremost, to entertain..." This group is sometimes booked at Jazzbones in Tacoma, but you can see them at the KP Fair.

## Little Bill & the Blue Notes

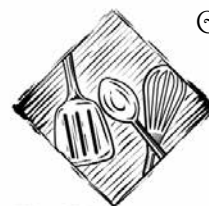
Saturday 8:30 – 11:30 p.m.

Little Bill Englehard has played nearly every club and concert hall in the Northwest over his 40-year career. Bill has become a Blues "Icon" for seasoned musicians and newcomers to the blues scene. Bill and his band give their best performance every time they play.



## Down Home Band debuts

The Down Home Band, organized in 1990 to get some kids involved in the Pioneer Day parade playing kazoos, graduated to a group of assorted ages playing traditional brass band instruments. Founded and directed by Dr. William Roes, with help from Dr. John Olsson, the group became a fixture in Pioneer Day parades, at Old-Timers Day, and to prepare for Santa's appearance at the KC Corral Christmas tree lighting. Roes wanted today's younger people to know the rousing march music played a century ago by brass bands for parades and special occasions. This marks their first appearance at the Key Peninsula Fair, playing Sunday afternoon at 1 p.m.



*Gourmet*  
**ESSENTIALS**  
FOR THE FOODIE IN YOU!

Great gift ideas for all those upcoming events.

**25% off**  
One Item

Must Present Coupon. One Per Customer.  
Not Valid on Sale Items

Exp. 8/31/08

*Gift Certificates Available*

5500 Olympic Drive #1-102 • Gig Harbor • 253-858-7711 • [www.gourmetessentials.net](http://www.gourmetessentials.net)

# WE SUPPORT THE KEY PENINSULA FAIR!

## BIRCH ELECTRIC

P.O. BOX 184, VAUGHN, WA 98394

253-884-1372 • 253-549-6916

253-377-0244 • [www.BIRCHELECTRIC.com](http://www.BIRCHELECTRIC.com)



*Birch Electric*

LICENSE #BIRCHEL981BT

ST. ANTHONY HOSPITAL COMING IN 2009



With St. Anthony’s emergency care so close,  
peace of mind will be only minutes away.

For the first time, life-saving services will be available right here on the Peninsula when St. Anthony’s emergency department opens in Gig Harbor in early 2009.

The Peninsula’s first and only full-service hospital

In life-threatening emergencies such as a heart attack, a stroke, or a car accident, we’ll be at the ready—24 hours a day, seven days a week—to care for you or your loved ones. Using all the latest equipment and technology, our specially trained experts will be able to care for patients with the utmost efficiency and precision when every second counts.

World-class medicine, hometown care

Our state-of-the-art emergency facility is designed to meet the needs of this growing region, with 19 treatment rooms and a special trauma room. Perhaps most reassuring of all is that we’ll be just minutes away in north Gig Harbor, with quick access from Highway 16. When life hangs in the balance, it will be nice to know that emergency services are right around the corner.

Visit [www.gigharborhospital.com](http://www.gigharborhospital.com) to see St. Anthony Hospital under construction and to learn more about the vital medical services that will be available in 2009.

ST. ANTHONY HOSPITAL – OPENING 2009  
Beyond expectations. Close to home.

Serving you tomorrow  
Starting in early 2009,  
St. Anthony Hospital will provide:

- 24-hour emergency department
- Inpatient and outpatient surgery
- State-of-the-art cancer center
- Heart catheterization and vascular care
- Diagnostic imaging
- Physical, occupational and speech therapies

Serving you today  
Franciscan Health System offers:

- Urgent medical care
- Same day surgery
- Family medicine and specialty care clinics
- Physical therapy
- Sleep disorders treatment
- Dialysis

CATHOLIC HEALTH INITIATIVES

St. Anthony Hospital

A Part of Franciscan Health System

LIVE  
Entertainment  
Schedule

All entertainment is on Main Stage

HEADLINERS

Friday: Donn Allard & Renegade Train  
Saturday: Little Bill & the Blue Notes

FRIDAY

Noon  
♦Opening Ceremony  
♦VFW #4 District Color & Honor Guard  
Flag raising  
♦Whitney Moore sings National Anthem  
♦Welcome to Fair; special guests  
1:00 p.m.  
Kevin Wolfe, Magician  
2:00 p.m.  
Music TBA  
2:45 p.m.  
Announcements  
3:00 p.m.  
Kevin Wolfe, Magician  
4:00 p.m.  
Music TBA  
5:00 p.m.  
Mazey-T-Clown  
6:00 p.m.  
Blues Passage  
8:30 p.m.  
Donn Allard and Renegade Train

SATURDAY

Noon  
Mazey-T-Clown  
1:00 p.m.  
Valentine Pigs  
2:00 p.m.  
Swing Fever (Big Band Sound)  
3:45 p.m.  
Announcements  
4:00 p.m.  
Valentine Pigs  
5:00 p.m.  
Shahdaroba Dancers  
6:00 p.m.  
Jazz Musette  
8:30 p.m.  
Little Bill and the Blue Notes

SUNDAY

Noon  
Mazey-T-Clown  
1:00 p.m.  
Dr. Roes & the Down Home Band  
2:00 p.m.  
Happy Hans’ Polka Band  
6:00 p.m.  
Fair closes



# Key Peninsula Community Fair



www.KeyFair.com or  
253-884-4FUN

PAID PARKING

Gate #2

WINE  
competition

Agri-Vision

Petting zoo  
kids events!

Restrooms &  
concession stand

Exhibits

Fair store  
Information

Fire engines  
First aid

Skate  
Park

Free Parking



fishing

tractor display

Kids Tractor Pull

Main stage

FOOD VENDOR

VENDORS

tractor display

Beer  
Garden

CARNIVAL



5514 Key Peninsula Highway (2 mi south of Key Center)

## DIRECTIONS

Hwy 16 to Purdy-Key Center Exit. Turn South onto SR 302 S. (Purdy Spit); go 10 miles through Key Center; on right hand side of Peninsula Hwy sits Key Peninsula Volunteer Park - 5514 Key Peninsula Hwy N.

253-884-4386

www.KeyFair.com

## Sponsors

*Thank you*

### Single Act Sponsor

- ♦ Collier & VanWinkle CPA
- ♦ Sound Credit Union
- ♦ Westwynd Motel & Apartment
- ♦ Horseshoe Lake Golf Club
- ♦ Peninsula Market
- ♦ Key Peninsula Metro Parks District
- ♦ Key Bank
- ♦ Friend of Fair
- ♦ C2C Enterprises LLC

### Silver Sponsors

- ♦ Geneva Foundation
- ♦ Peninsula Light Co

- ♦ Chilly Billy Polar Ice
- ♦ Danna Webster
- ♦ Ellis Accounting
- ♦ Energy Exteriors
- ♦ Gig Harbor Wood and Metal Arts
- ♦ Giggling Greek
- ♦ Home Interiors
- ♦ J. Guinn Enterprises LLC  
Absolute Auto Care
- ♦ John L. Scott Realty
- ♦ Key Peninsula Business Association

### Entertainment Sponsor

- ♦ Angel Guild
- ♦ MultiCare Health System
- ♦ Cenex
- ♦ Franciscan Healthcare-St Joseph

- ♦ Lariat Ladies from Lilliwaup
- ♦ Lois McMahan
- ♦ Marlyn Jensen
- ♦ Nathalia A Knox
- ♦ Northwestern General  
Development Corp.
- ♦ Olympic Pharmacy
- ♦ Rosenbach Financial Services
- ♦ Ruth H Bramhall
- ♦ Solar Gem Greenhouses

# KP Fair Entertainers

## Kevin Wolfe, Magician

Kevin has been performing a comedy magic show for the past 20 years, performing over 200 shows per year. He has appeared with his own show on Discovery Channel & The Learning Channel. He has even appeared live on stage with illusionist David Copperfield. This family-oriented show is a rollicking blend of comedy, magic, illusion and audience participation that will keep any crowd scratching their heads but laughing at the same time. The magic show is excellent all by itself or in combination with the hypnosis show. Both shows are geared for families and teenage audiences.

## Mazey-T-Clown

She is witty, fun, funny, and magical! With her long, lush lashes and bright clothing, Mazey brings excitement and a sense of wonder to children and adults as she creates animals from balloons, face-paints, and tells amazing stories. Mazey is enchanting and delightfully approachable. On stage and walking the fairgrounds to delight one and all.



## Shahdaroba Middle Eastern Dance Troupe

Shahdaroba, a Middle Eastern dance troupe, has been performing at fair, community festivals and professionally produced shows in the Pacific Northwest since 1985. Performances feature use of canes, baskets, veils, fans, and swords, incorporating a variety of authentic Armenian, Egyptian, Lebanese and Turkish music. Belly dancing is one of the world's oldest art forms, passed down through generations of dancers. Shahdaroba's programs are designed to please audiences of all ages. They encourage the audience to support the dancers by clapping along with the music.



A dancer with the  
Shahdaroba  
troupe.

*Photo courtesy of  
Deborah Anderson*

## Valentines Performing Pigs

Valentines Performing Pigs is a unique, fast-paced act that consists of mini pigs doing tricks and incredible athletic feats on a large stage. The chubby celebrities dance, jump in the air, play catch with the audience, run up teeter totters, slam dunk basketballs, pop balloons, roll barrels and madly roar across the stage on scooters and skateboards.

Corporations like Microsoft hire the porkers for meetings, professional sports teams feature the athletic pigs at half-time, and schools hire the clever hams for assemblies.

They amaze, educate, and amuse audiences all over the country.



## The Davis Carnival

The Davis Carnival from Clackamas, Ore., one of the largest shows in the Northwest, returns for the third year and is already booked for next year.

They advertise fun for the whole family, regardless of age or income level. Thrilling rides, challenging games, and zesty foods highlight a time of fun, laughter, and excitement for all. Davis holds a high safety record, and its employees are screened, and instructed to be clean and courteous.



# Amateur wine makers showcased at the fair

By Danna Webster, KP News

**W**ine judging is a feature event of the Agri-Vision show at the fair again this year. Key Peninsula winemakers will have their wines judged among the many wines made by amateur vintners in the region. The Puget Sound Amateur Wine and Beer Making Club provides the judges. Each contestant submits two bottles of the same wine. One bottle will have no identification other than an entry designation. The second bottle will have the vintner's label and will be used as a display bottle. Awards will be posted on the display bottles after the judging, which is expected to be completed by noon on Saturday, July 12. The wine making event was established last year by Claude Gahard of Trillium Creek Winery and Mike Salatino of The Farm. They wanted to provide the opportunity for local wine-makers to become acquainted and form an information network.

The wines of our region range from delicious fruit wines such as blackberry and huckleberry to cultivated grapes such as pinot noir and Muller-Thurgau. Today, it is rare to find a wine made from the Island Belle grape. The Island Belle started commercial wine making in Western Washington and the place where it started is just across Case Inlet on Stretch Island. The island winery was



Photos by Danna Webster

Some photos from 2007 Wine Judging Booth. Daniel Boone is shown holding his winning entry.

called the Old St. Charles Company. It holds the distinction of being the first bonded winery in the state of Washington. The company started soon after the repeal of prohibition in 1933; and its state license number is "1." By comparison, the Trillium Creek Winery, located in Home, holds state license No. 83913.

"That number indicates how many wineries were approved in the state of Washington. A lot of them don't exist anymore," Gahard says. Like many of the wine making contestants, Gahard started

making wine in his kitchen. But, as many Key Peninsula residents know, he has lost his status as an amateur and so there will be no Trillium Creek Winery bottles in the KP Fair contest.

Last year, a third place ribbon was awarded to Home resident Daniel Boone, for his Rose? entry. Boone says the early July fair dates mean that his prize-winning tomatoes don't have a chance of getting there, but he thinks the wine judging event is a good idea. "Anything new that encourages produce and local crafts, I'm all for it," says our own local direct descen-

dant of the famous frontiersman of the same name.

The wines are entered into a category: Fruit/Berry; Country/General; Dessert/After-Dinner; Non-Varietal Grape; and Varietal Grape. Varietal wines are made primarily from a single variety of grape, and that grape is identified on the label. They are then judged by the types of wines within those categories: red, white, blush, sweet, or dry. There will be first, second and third place awards for each category of wine; and there will be one Best of Show award.



## How to enter

This is a free event for amateur wine making contestants. There is no fee to enter. The entry form must be received by the fair staff no later than July 3. The entry form and rules are posted on the KP Fair Website at [www.keyfair.org](http://www.keyfair.org). Click on "The Fair" and then "Wine Judging." All entries must be delivered to the competition site at the fair on Friday, July 11, between 7:30 a.m. and 10 a.m.

## WE SUPPORT THE KEY PENINSULA FAIR!

### DANA'S HEATING & A/C

P.O. BOX 607, BURLEY, WA 98322

253-851-5196 • 1-888-290-7670

[www.DANASHEATING.com](http://www.DANASHEATING.com)



## Dana's HEATING & A/C

*We have helped thousands of families add warmth  
and comfort to their homes since 1997*





# Happy Hans' Oompah band jams

By Jeanette Brown, KP News

Hans Rainier Jr. and his teenage son, Erik, are carrying on a family tradition at the Key Peninsula Community Fair this year on Sunday, July 13 between 2 - 6 p.m. They will perform on the Main Stage to bring residents of the KP a wide selection of their traditional and lively European/American music along with the rest of the Happy Hans' "Oompah" band.

"I really enjoy this old-time music and don't want to see it disappear. This music is in my blood," Rainer says.

The "Happy Hans" group was formed over 30 years ago by Hans Rainier, Sr., who was born in Austria and immigrated to the United States via Canada. Hans, Jr., born and raised in the Seattle area, started playing with his dad when he was about 12 years old in 1976. Now Erik Rainier, who also plays the bass guitar, will join his dad as the substitute drummer while Rolf Sellhast vacations this year

in San Antonio, Texas.

Sellhast, who is 80 years old, will be back to play the fall Octoberfest line-up with the other two original members of the group, tuba player Bert MacDonald and Kory Tideman, who plays the button box accordion.

"The band really enjoyed playing at the Puyallup Fair last year and we have been a mainstay at the Leavenworth Octoberfest celebration for over 10 years now," Hans says.

Rainier, who can yodel with the best of them, picked up the skill naturally from his father and also plays the trumpet and button box accordion. He has a CD titled "Happy Hans Presents Total Yodel" and maintains that "no home is a happy home without Happy Hans' music."

"This music is rich in tradition and great family fun for everyone. I am looking forward to performing at the KP Community Fair with my son," Rainier says. Learn more about the Happy Hans music band at [www.happyhansmusic.com](http://www.happyhansmusic.com)

**" I really enjoy this old-time music and don't want to see it disappear. This music is in my blood. "**

— Hans Rainier Jr.



Photo courtesy Happy Hans' Music

Happy Hans, second from right, and son Erik on drums.



## COME SEE US AT THE FAIR!



**Caron Williams**, ABR, GRI  
(253) 853-7400  
(253) 509-2060



**Teresa Sonnen**  
(253) 853-7400  
(253) 678-3806



**John L. Scott**  
REAL ESTATE

**KEY PENINSULA OFFICE ♦ 253-853-7400**  
11717 State Route 302 NW ♦ Gig Harbor, WA 98329

## Westwynd Motel & Suites

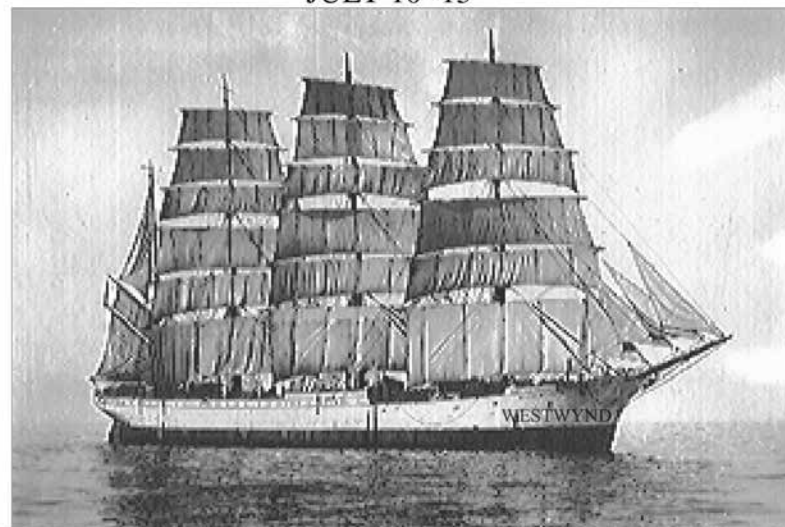
### Best Rates in Town!

Web Site: [www.westwyndmotel.com](http://www.westwyndmotel.com)

6703 144th St. NW  
Gig Harbor, WA

Office 253-857-4047  
Reservations 800-468-9963

WE ARE PROUD SPONSORS OF THE KEY PENINSULA FAIR.  
JULY 10 -13





# VFW District # 4 Color and Honor Guard

Key Peninsula News staff

The VFW #4 Color and Honor Guard raise the flag for the fifth year at the fair opening ceremonies at Friday at noon.

Commander Gary Helmick organized a full Military Color and Honor Guard team in 1999 at Post #4990 of Vaughn, to perform full honors at military funerals at Tahoma National Cemetery and various military and related functions throughout the region.

In 2001, the Honor Guards became the VFW District #4 Color and Honor Guard Team, representing the VFW on the west side of the Narrows Bridge to just west of Kingston. The team performs many local events for several organizations, and visit schools, too.

Their Memorial Day duty is at the Ivy Green Cemetery in Bremerton, where they perform a ceremony at the Tomb of the Unknown, the only one in the country outside Arlington National Cemetery. Entombed at Ivy Green are the remains of 21 military unknowns.

The Color Guard represented the Key Peninsula when the South Korean consul general presented medals to veterans of the Korean war.

They have received Veterans



Photo courtesy of VFW

VFW #4 Color and Honor Guard at Ivy Green Cemetery for Memorial Day ceremonies. Left to right: Karl Bonn, Paul Dulac, Gary Helmick, Bob Cate and Steve Kuhn.

Guardian Angel awards and pins from Govs. Gary Locke and Christine Gregoire.

Current Key Peninsula members include Commander Gary Helmick,

Carl Bonn, Bob Cate, Steve Kuhn, Dale Spitler, Rick Stout, and David Till.

This special service organization would like more members. For info: Gary Helmick 253-884-2442.



Bunnies both for petting and for showing are featured at this year's petting zoo.

Photo by  
Hugh  
McMillan

## Petting Zoo and more in Agri-Vision

The petting zoo is a regular highlight of the Agri-Vision area at the fair. Kris Sherman says various animals will be in the zoo, including including a miniature horse and donkey, a peacock, sheep, chickens, rabbits and ducks.

4-H members will show their rabbits and compete for ribbons. A 4-H sewing competition will also be held.

For more information, call 884-4097.

## Congratulations 2008 Graduates!

- Self & Full Service Copies B/W and Full Color
- Large Format Copies B/W & Color, Blue Prints
- Printing, Business Cards, Letterhead, Invitations, Etc.
- Custom and Standard Self Adhesive Labels
- UPS • Postal Service • FedEx®
- Crate & Freight

**50% OFF**  
 Select boxes  
& moving  
supplies

- Desktop Publishing & Design
- Rubber Stamps
- Laminating & Binding
- Notary and Many More Services!

### The UPS Store

www.upsstore.com

360-895-3290

5114 Pt. Fosdick Dr N.W. • Gig Harbor

3377 Bethel Rd. SE • Port Orchard

**253-851-5104**

LOCALLY OWNED SINCE 1987

Some of the nicest people on the Key Peninsula are **ANGELS**.  
No halos, no wings, but dedication, hard work, and warm friendliness.

**Would you like to be one?**

We'll be happy to train you as either a clerk or sorter at the

**ANGEL GUILD THRIFT STORE**

Call Bonnie at 884-5983

**ANGEL GUILD THRIFT SHOP**

in the Key Center Corral

253-884-9333 ~ angelguild9013@hotmail.com

Open Wednesday through Saturday 10:00 AM to 4:00 PM

The Angel Guild Thrift Shop is an independent philanthropy and is not affiliated with any other organization.

# WE SUPPORT THE KEY PENINSULA FAIR!

Elect Marlyn

## JENSEN

State Representative \* GOP



A UNITED 26TH FOR MARLYN CAMPAIGN COMMITTEE

P.O. Box 2749, Gig Harbor, WA 98335 • 253-851-5439

WWW.UNITEDFORMARLYN.COM • MARJEN44@COMCAST.NET



# KIDS' PEDAL TRACTOR PULL



By Donna Smeall, KP News

Bring your children ages 4 through 12 down to the Key Peninsula Fair, where they will become the Star of the Show during the Kids' Pedal Tractor Pull Competition.

The children are encouraged to participate in the show and learn a bit about the importance of farming in a fun way. Tractors designed with modified pulling weights are attached to a weight transfer sled. These John Deere tractors make it easy for the children to demonstrate their skill at pulling the tractor all the way down a 25-foot path.

All children get introduced to the audience, invited to do their best and given recognition for their accomplishments during their pull. Some of them do incredibly well at the pull and enter the finals — which is where the fair's entertainment gets wilder. Whatever the outcome, it is the mission of the show director to raise each child's self-esteem with this fun activity.

The Fast Track Entertainment group has been performing at shows across the nation since 1994. The tractor pull for the children has always been "tops" for audience participation, educating them about farm life and just plain down-home fun!



Above, An antique tractor displayed at last year's fair. *Courtesy KPCF*

Left, A pedal tractor contestant gets ready to pull.

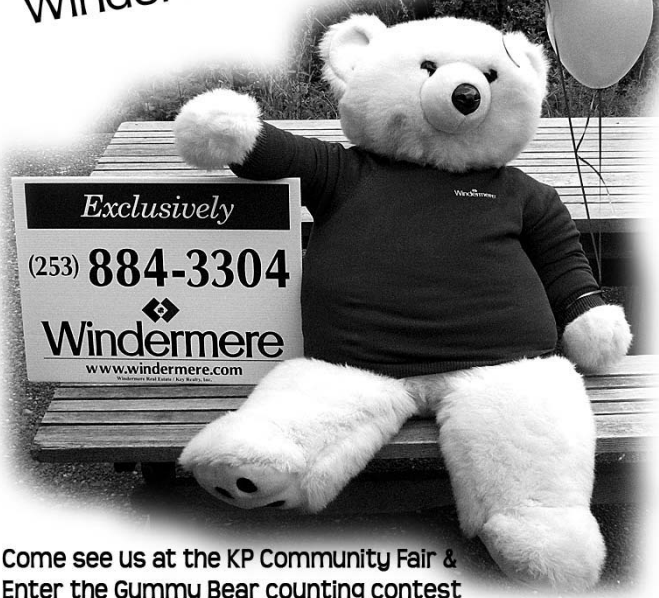
*Photo by Danna Webster*

EXCLUSIVELY PRESENTED BY

## Windermere Real Estate

### WIN!

Winnie the Windermere bear



**FREE  
Balloons  
for kids**

Come see us at the KP Community Fair & Enter the Gummy Bear counting contest

Windermere Real Estate-Key Realty - 11615 SR 302 NW - 253-857-3304

## CS Floors

Connie Schick



**B&C Enterprises, Inc.**  
8803 SR 16 NW • Gig Harbor, WA 98332  
253-853-5833

Toll Free 1-888-707-6887  
Hours: Monday thru Friday 9-5, Saturday 10-2  
Evening & weekend appointments available



**CS Floors** the  
Key Peninsula's  
most experienced  
floor covering dealer.

*Where your satisfaction  
is our priority*

The staff and management of CS Floors wishes everyone a wonderful summer and we hope you have a great time at the Key Peninsula Fair.

CARPET • WOOD • CERAMIC TILE & STONE • VINYL  
LAMINATE AND SOLID-SURFACE COUNTERTOPS  
WINDOW TREATMENTS